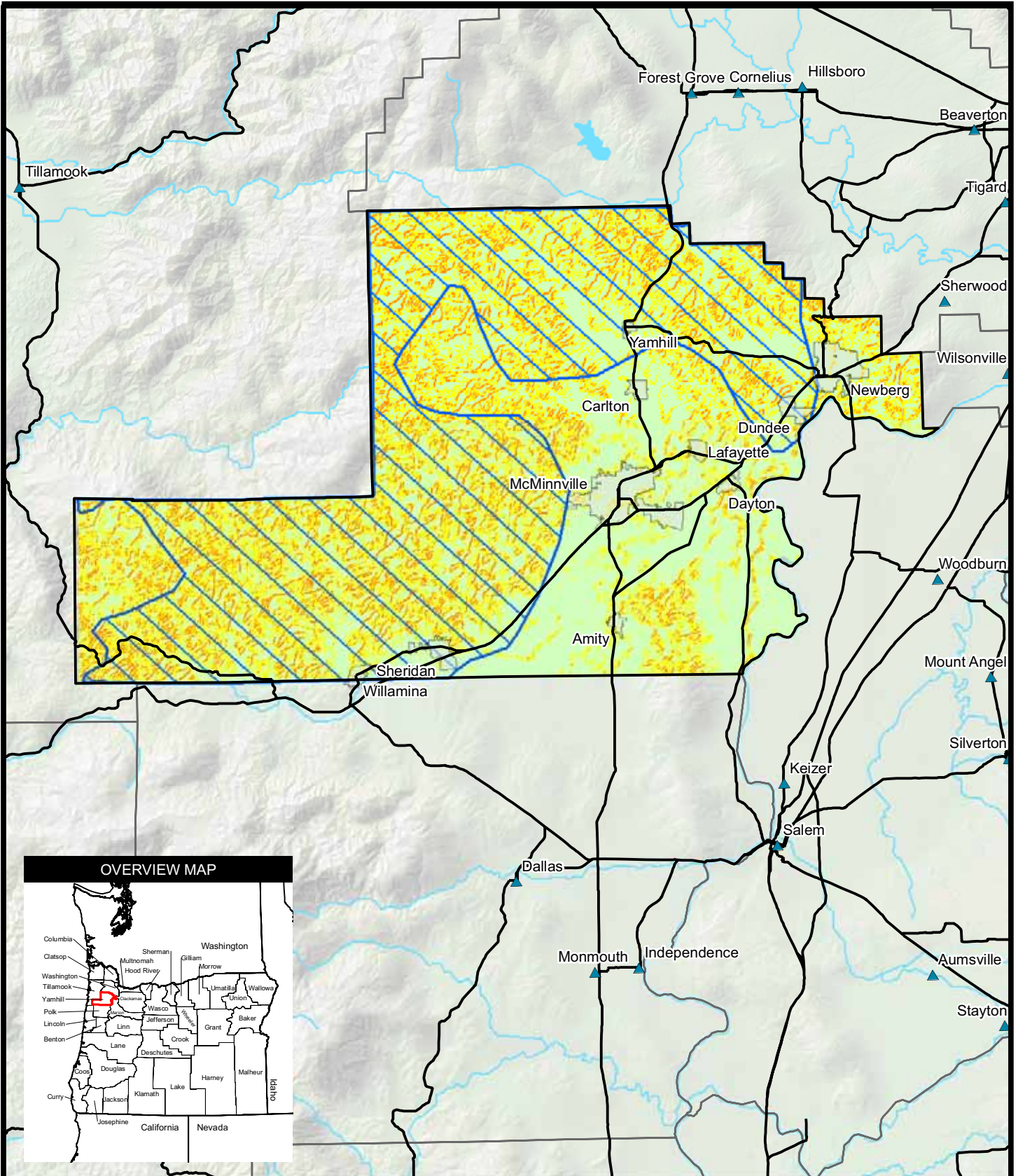


M:\PROJECTS\2008\15300293 - FEMA - OREGON HAZARD MITIGATION PLANNING\MXD\YAMHILL\FIGURE K-4 - LANDSLIDE HAZARD AREA.MXD



**LEGEND**

- |  |                         |
|--|-------------------------|
| <b>Landslide Susceptibility</b>              | ▲ City                  |
| ■ Moderate Potential                         | ▭ City Limits           |
| <b>Slope Inclination Failure Hazard Area</b> | ▭ County Boundary       |
| ■ Low (<14 degrees)                          | — Major Road or Highway |
| ■ Moderate (14-32 degrees)                   | ~ Streams & Waterways   |
| ■ High (>32 degrees)                         | ☪ Lakes & Waterbodies   |

**LANDSLIDE HAZARD AREA  
YAMHILL COUNTY  
HAZARD MITIGATION PLAN**

5      0      5      10  
Miles



SOURCES: Slope Inclination (FEMA), ESRI (highways 1996), USGS (counties, cities, lakes, rivers, hillshade)  
MAP DATA: July, 2008

FIG. NO:  
K-4