

General Land Ownership	
	Bureau of Indian Affairs
	Bureau of Land Management
	Local Government
	Oregon Department of Fish and Wildlife
	Oregon Department of Forestry
	Oregon Department of State Lands
	Oregon Parks and Recreation Department
	Private; Private
	State
	US Fish and Wildlife Service
	USDA Forest Service

LEGEND

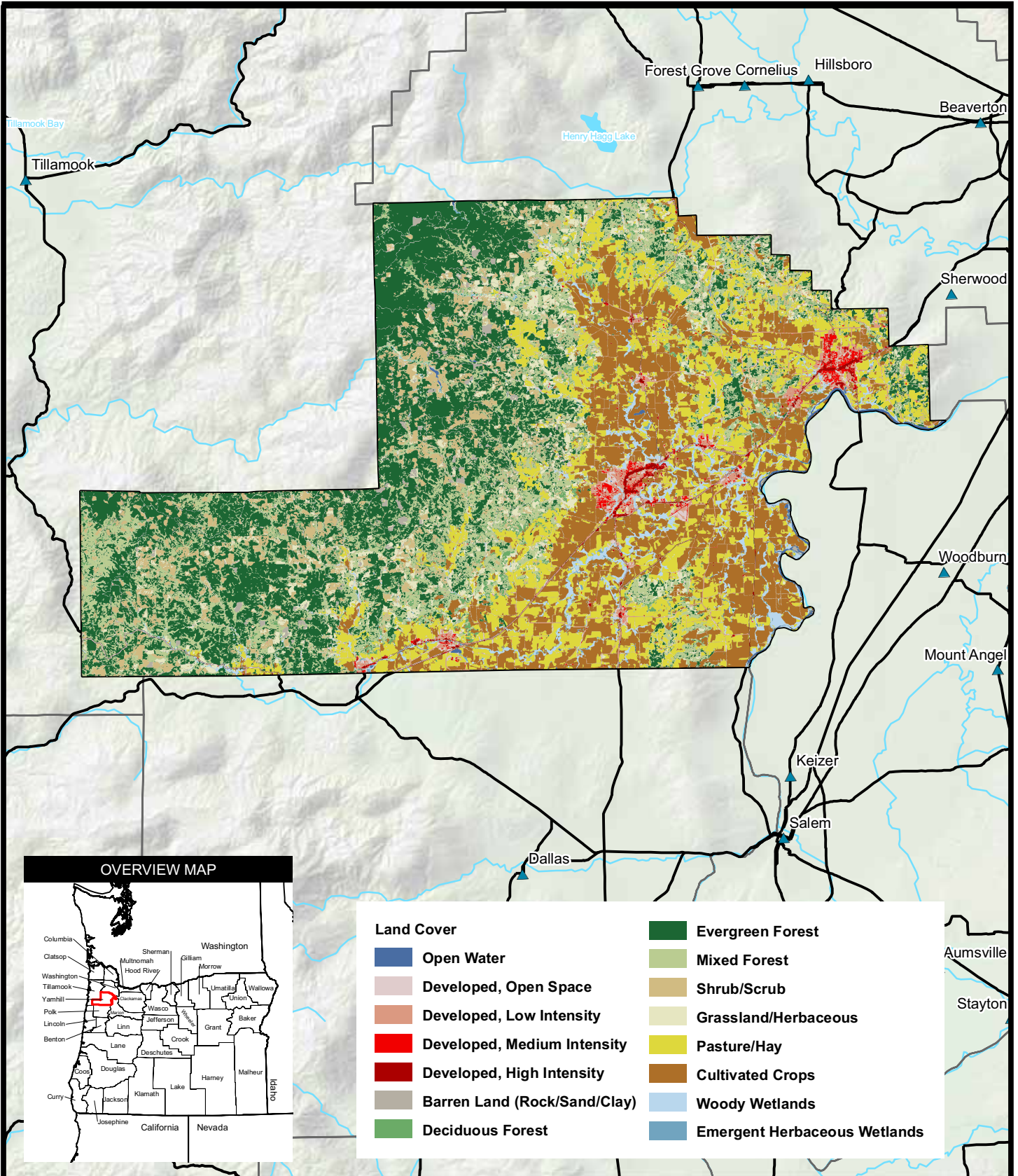
- City
- City Limits
- County Boundary
- Major Road or Highway
- Streams & Waterways
- Lakes & Waterbodies

**LOCATION AND GENERAL LAND OWNERSHIP
YAMHILL COUNTY
HAZARD MITIGATION PLAN**



SOURCES: Ownership (FEMA), ESRI (highways 1996), USGS (counties, cities, lakes, rivers, hillshade) MAP DATA: July, 2008

FIG. NO:
K-1



Land Cover			
	Open Water		Evergreen Forest
	Developed, Open Space		Mixed Forest
	Developed, Low Intensity		Shrub/Scrub
	Developed, Medium Intensity		Grassland/Herbaceous
	Developed, High Intensity		Pasture/Hay
	Barren Land (Rock/Sand/Clay)		Cultivated Crops
	Deciduous Forest		Woody Wetlands
			Emergent Herbaceous Wetlands

LEGEND

- City
- County Boundary
- Major Road or Highway
- Streams & Waterways
- Lakes & Waterbodies

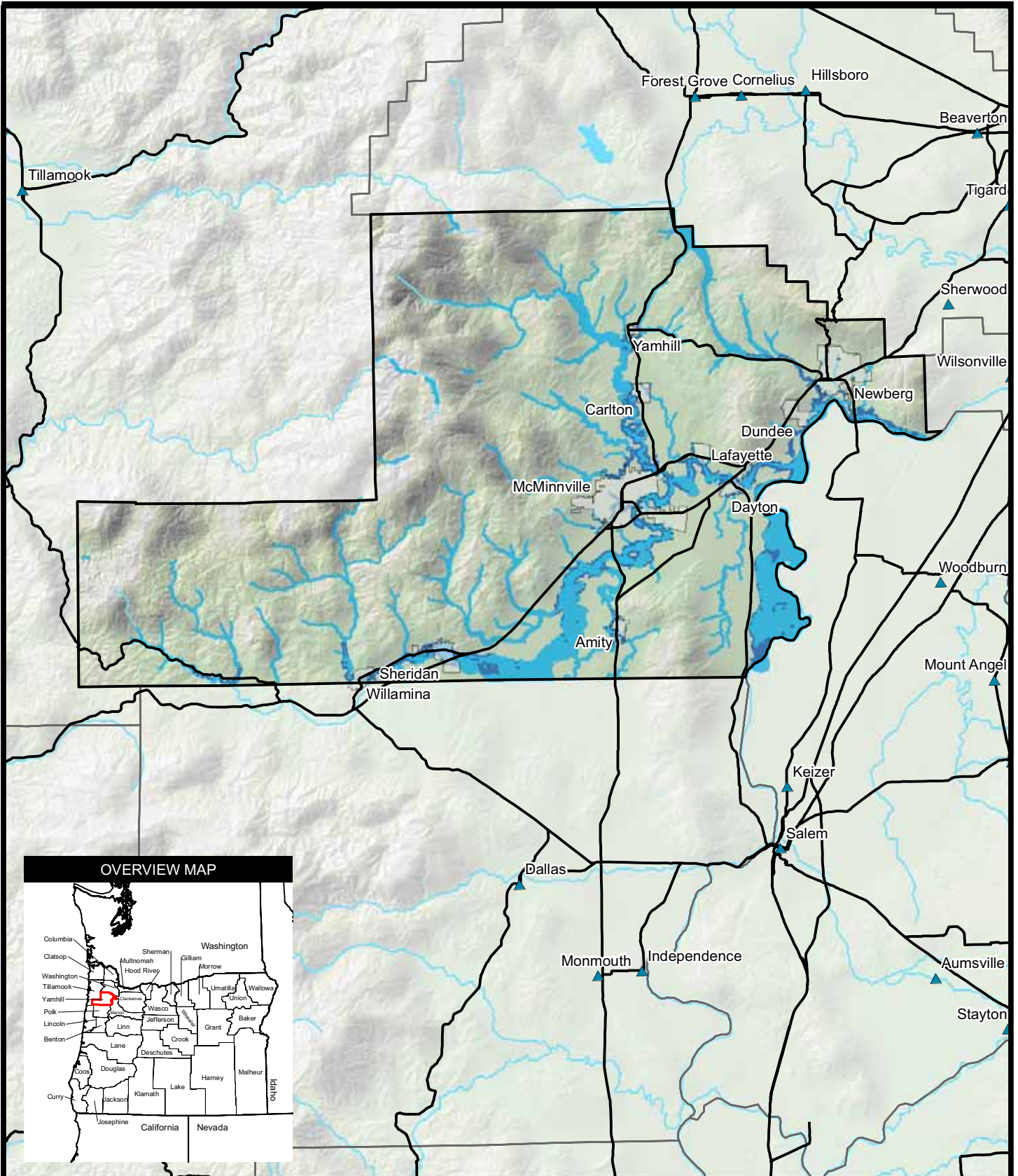
**LAND COVER
YAMHILL COUNTY
HAZARD MITIGATION PLAN**

Miles

SOURCES: ESRI (highways 1996), USGS (land cover, counties, cities, lakes, rivers, hillshade) MAP DATA: July, 2008

FIG. NO:
K-2

M:\PROJECTS\2008\15300293 - FEMA - OREGON HAZARD MITIGATION PLANNING\MXD\YAMHILL\FIGURE K-3 - FLOOD HAZARD AREA.MXD



LEGEND

- | | |
|--|-------------------------|
| FLOOD ZONE | ▲ City |
| 100-Year Flood Zone | ▭ City Limits |
| 500-Year Flood Zone | ▭ County Boundary |
| Designated Floodway | — Major Road or Highway |
| | ~ Streams & Waterways |
| | ☪ Lakes & Waterbodies |

**FLOOD HAZARD AREA
YAMHILL COUNTY
HAZARD MITIGATION PLAN**

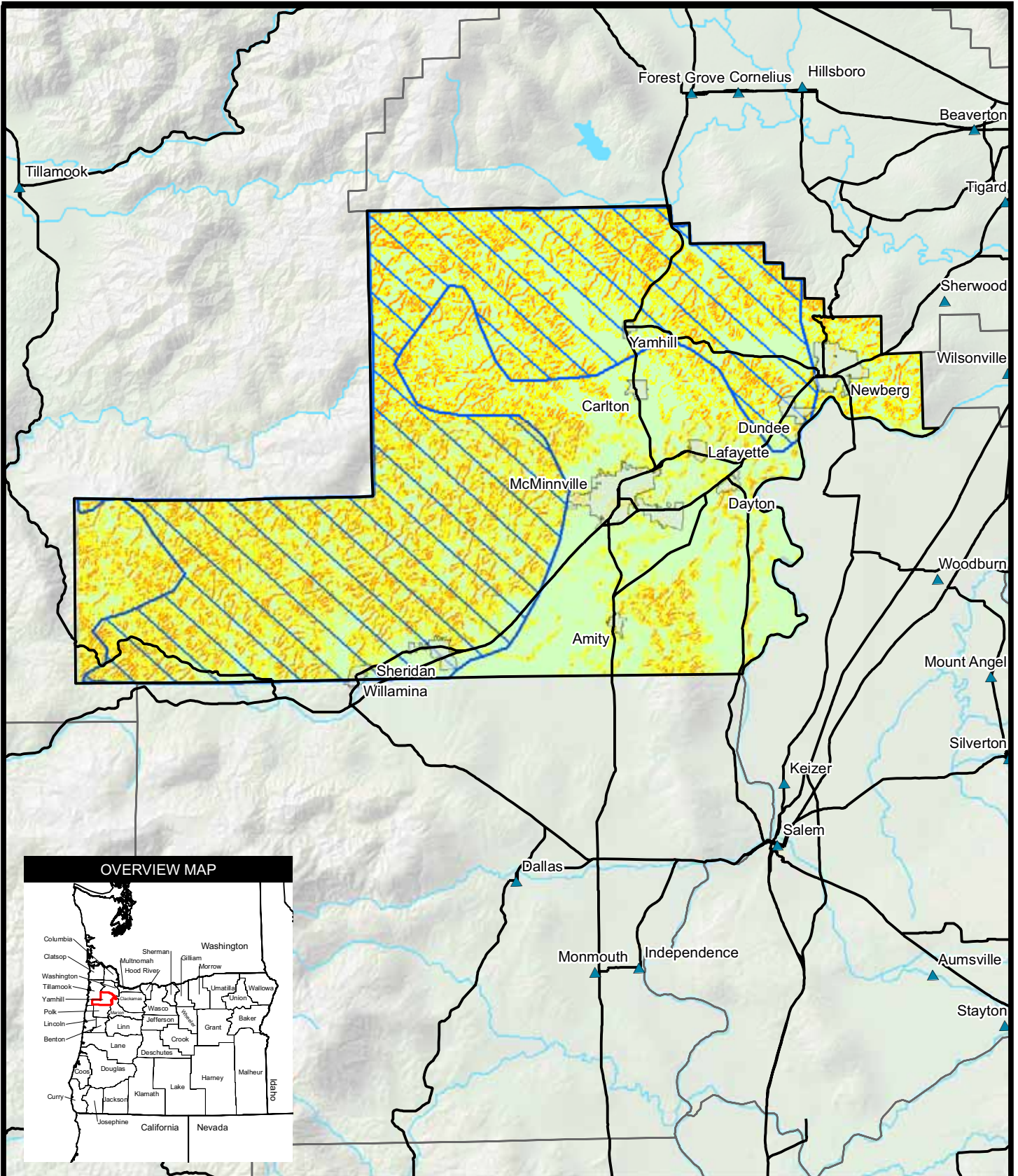
5 0 5 10

Miles

SOURCES: Flood Zones (FEMA), ESRI (highways 1996), USGS (counties, cities, lakes, rivers, hillshade) MAP DATA: July, 2008

FIG. NO:
K-3

M:\PROJECTS\2008\15300293 - FEMA - OREGON HAZARD MITIGATION PLANNING\MXD\YAMHILL\FIGURE K-4 - LANDSLIDE HAZARD AREA.MXD



LEGEND

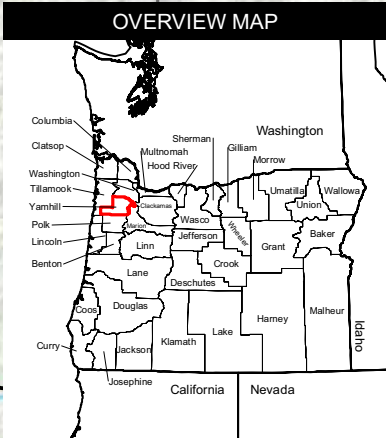
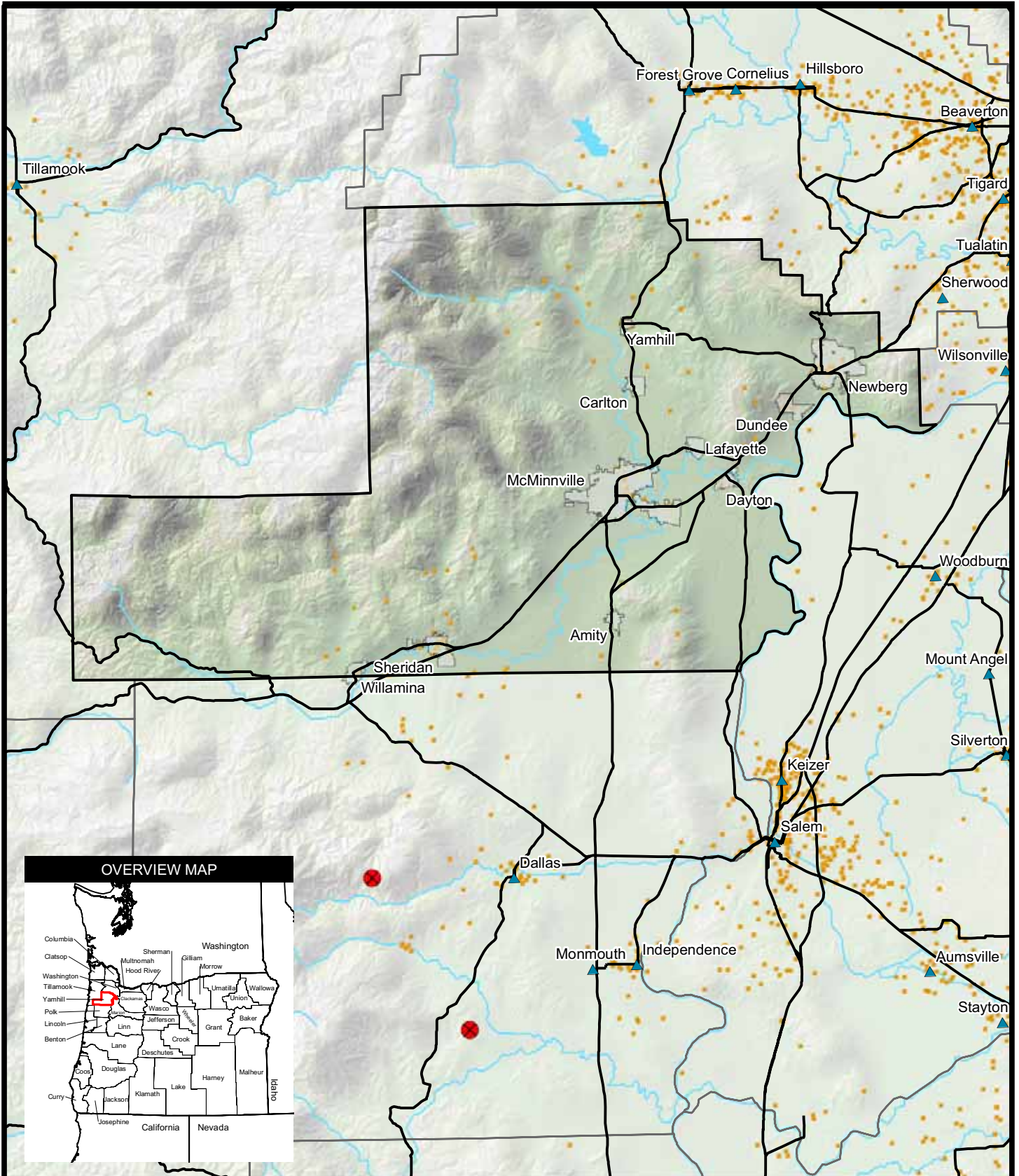
- | | |
|--|-------------------------|
| Landslide Susceptibility | ▲ City |
| ■ Moderate Potential | ▭ City Limits |
| Slope Inclination Failure Hazard Area | ▭ County Boundary |
| ■ Low (<14 degrees) | — Major Road or Highway |
| ■ Moderate (14-32 degrees) | ~ Streams & Waterways |
| ■ High (>32 degrees) | ☪ Lakes & Waterbodies |

**LANDSLIDE HAZARD AREA
YAMHILL COUNTY
HAZARD MITIGATION PLAN**

5 0 5 10
Miles

SOURCES: Slope Inclination (FEMA), ESRI (highways 1996), USGS (counties, cities, lakes, rivers, hillshade)
MAP DATA: July, 2008

FIG. NO:
K-4



LEGEND

● Local Reported Fires (1996-2003)	 County Boundary
● State Reported Fires (1962-2004)	 Major Road or Highway
▲ City	— Streams & Waterways
 City Limits	— Lakes & Waterbodies

**HISTORIC FIRES
YAMHILL COUNTY
HAZARD MITIGATION PLAN**

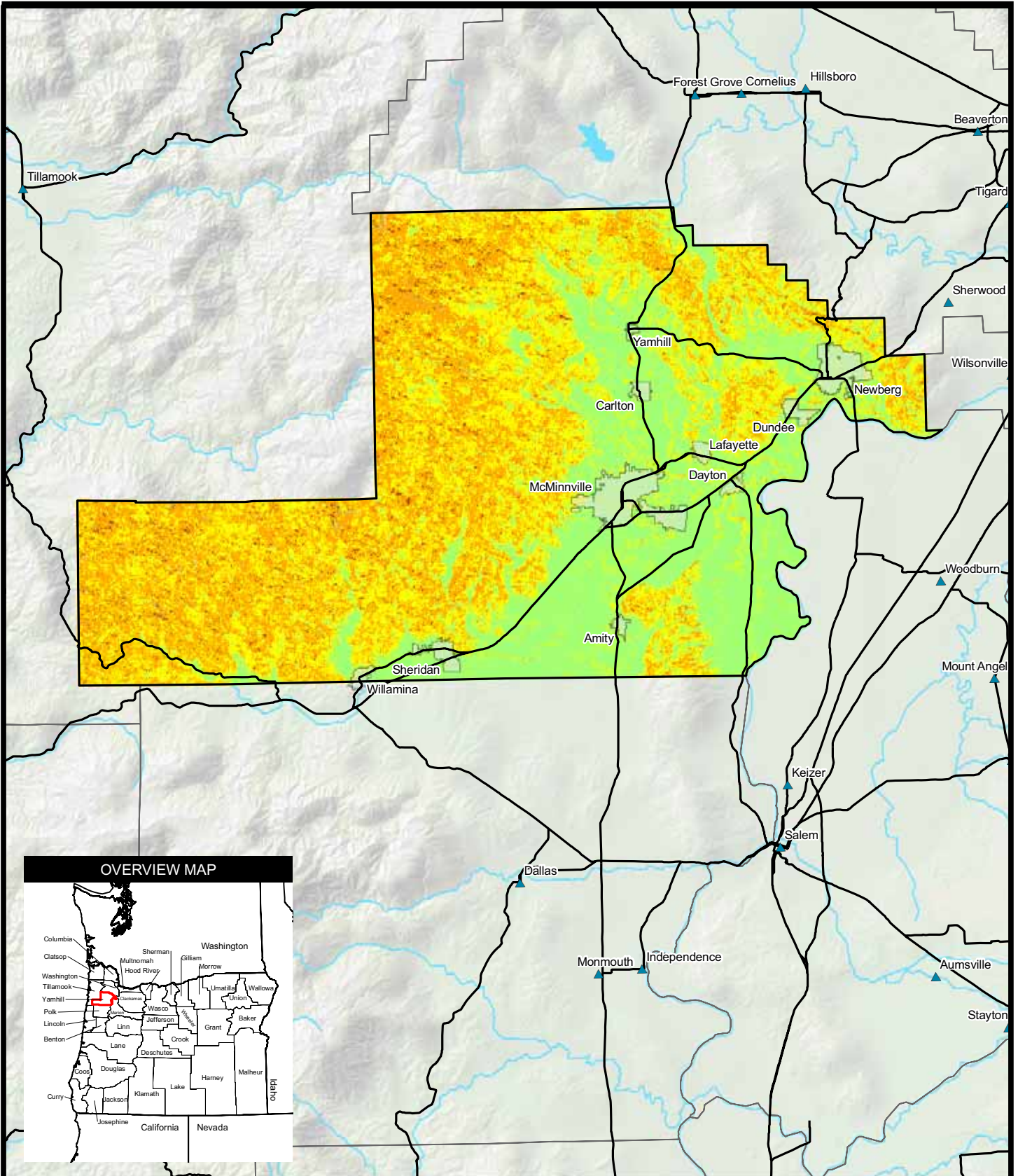
5 0 5 10
Miles

URS

SOURCES: Fire (Oregon), ESRI (highways 1996), USGS (counties, cities, lakes, rivers, hillshade) MAP DATA: July, 2008

**FIG. NO:
K-5**

M:\PROJECTS\2008\15300283 - FEMA - OREGON HAZARD MITIGATION PLANNING\MXD\YAMHILL\FIGURE K-6 - FIRE HAZARD AREA.MXD



LEGEND

- | | |
|---------------------------|--------------------------------|
| Wildland Fire Risk | City |
| Moderate | City Limits |
| High | County Boundary |
| Very High | Major Road or Highway |
| Extreme | Lakes & Waterbodies |
| | Streams & Waterways |

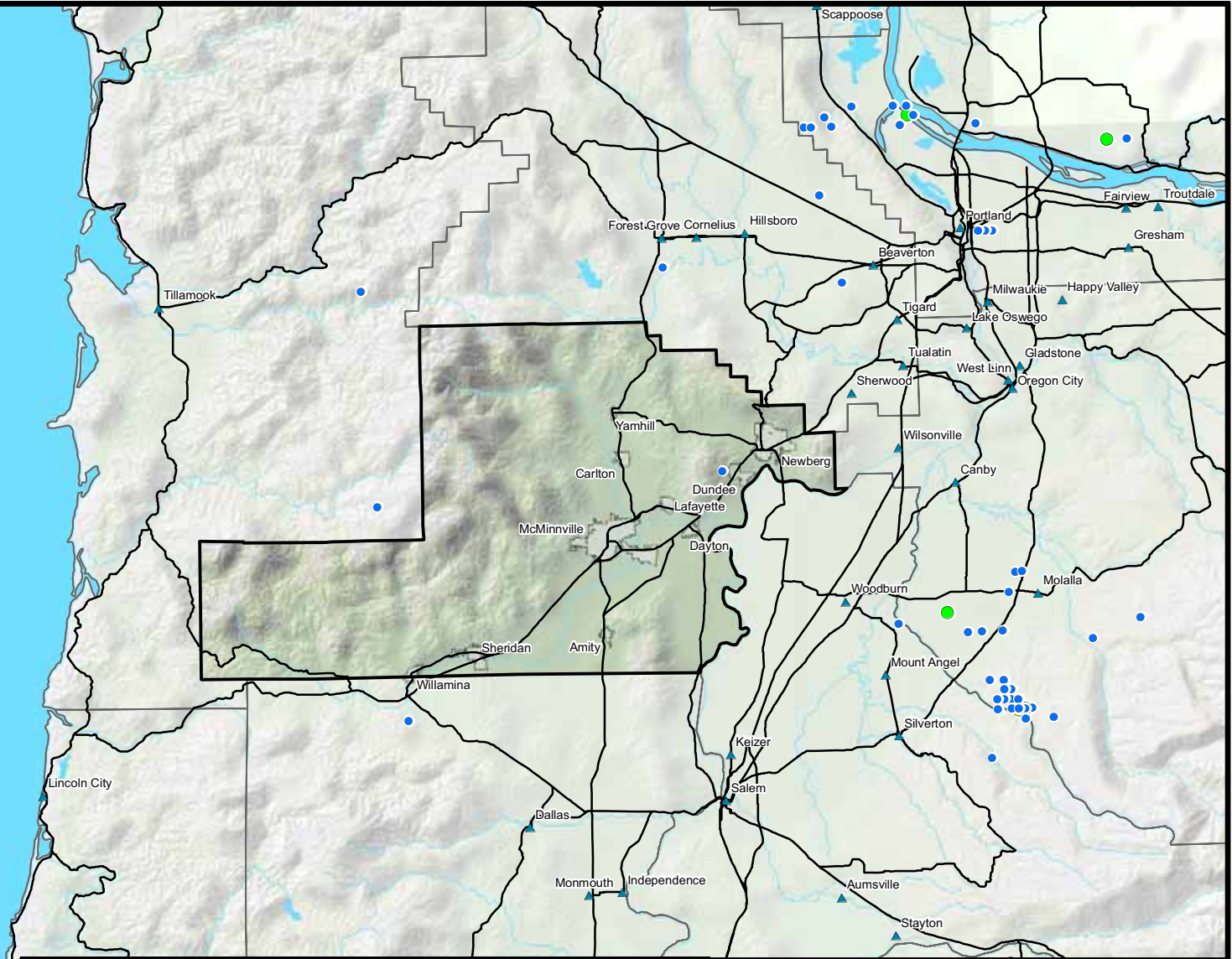
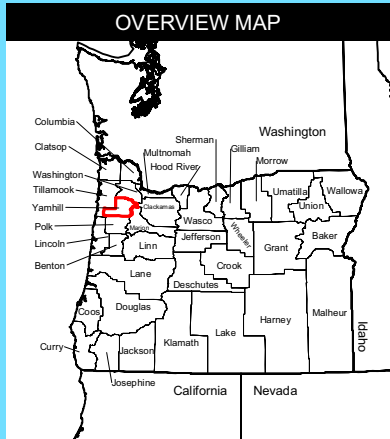
**FIRE HAZARD AREA
YAMHILL COUNTY
HAZARD MITIGATION PLAN**

5 0 5 10
Miles



SOURCES: ESRI (highways 1996), USGS (wildland fire, counties, cities, lakes, rivers, hillshade) MAP DATA: July, 2008

FIG. NO:
K-6



LEGEND

● M < 3.9	▲ City
● M 4.0-4.9	▭ City Limits
● M > 4.9	▭ County Boundary
	— Major Road or Highway
	— Streams & Waterways
	■ Lakes & Waterbodies

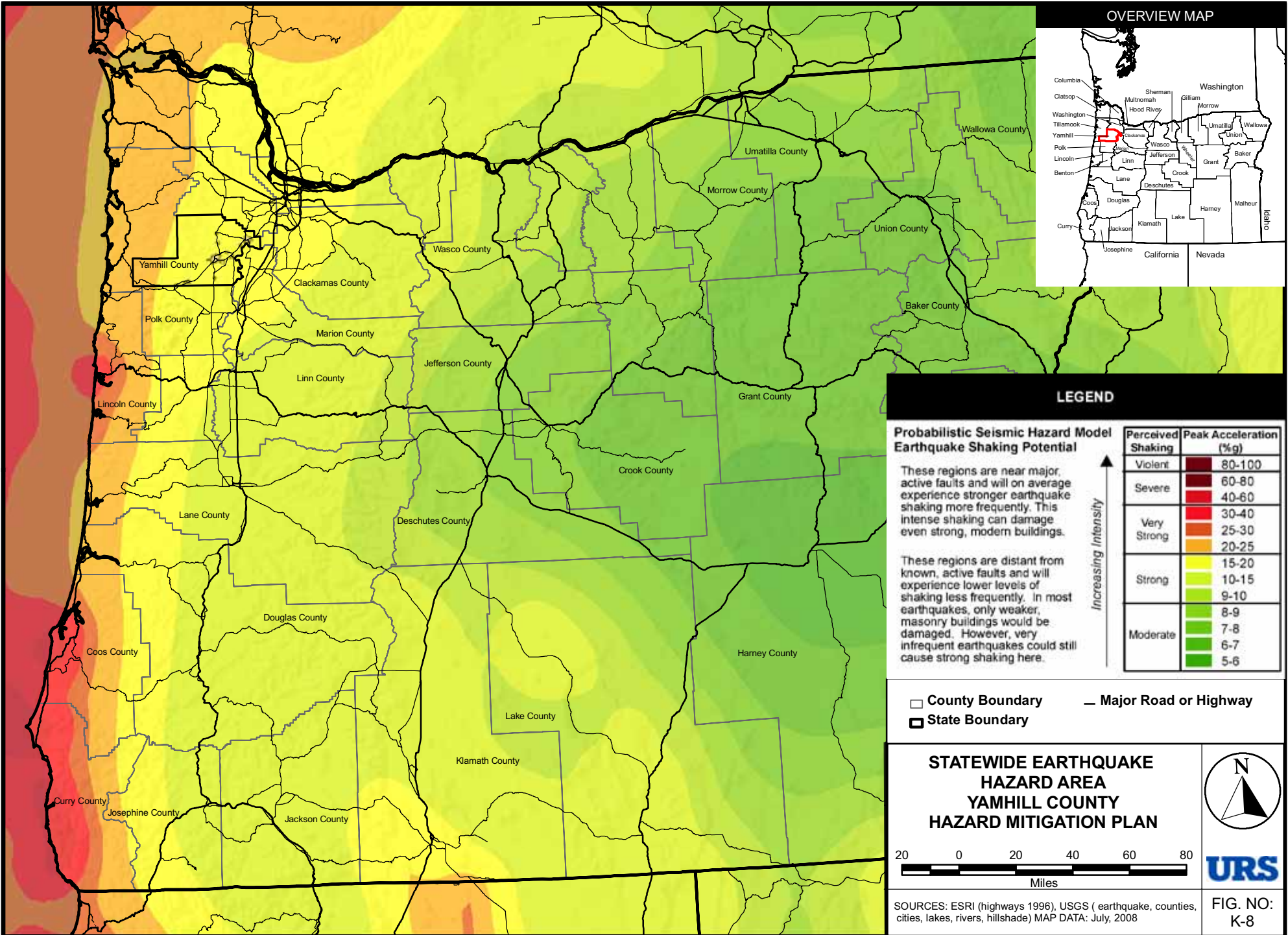
**HISTORIC EARTHQUAKES 1840-2007
YAMHILL COUNTY
HAZARD MITIGATION PLAN**

5 0 5 10 15
Miles

URS

SOURCES: ESRI (highways 1996), USGS (earthquake, counties, cities, lakes, rivers, hillshade) MAP DATA: July, 2008

FIG. NO:
K-7



OVERVIEW MAP



LEGEND

Probabilistic Seismic Hazard Model Earthquake Shaking Potential

These regions are near major, active faults and will on average experience stronger earthquake shaking more frequently. This intense shaking can damage even strong, modern buildings.

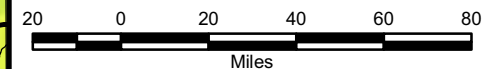
These regions are distant from known, active faults and will experience lower levels of shaking less frequently. In most earthquakes, only weaker, masonry buildings would be damaged. However, very infrequent earthquakes could still cause strong shaking here.

Increasing Intensity ↑

Perceived Shaking	Peak Acceleration (%g)
Violent	80-100
Severe	60-80
Very Strong	40-60
	30-40
	25-30
	20-25
Strong	15-20
	10-15
	9-10
Moderate	8-9
	7-8
	6-7
	5-6

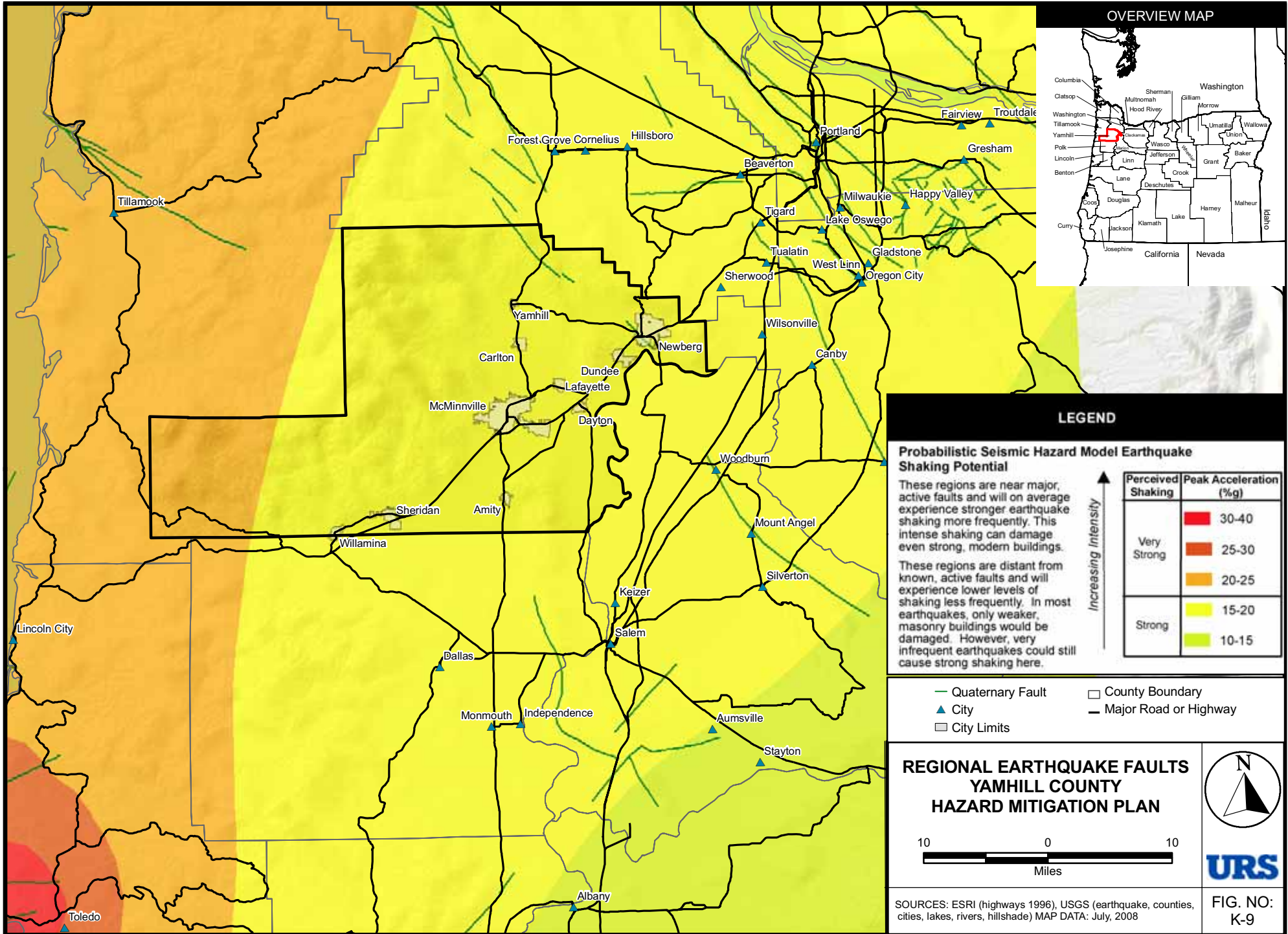
- County Boundary
- ▬ Major Road or Highway
- ▭ State Boundary

**STATEWIDE EARTHQUAKE HAZARD AREA
YAMHILL COUNTY
HAZARD MITIGATION PLAN**



SOURCES: ESRI (highways 1996), USGS (earthquake, counties, cities, lakes, rivers, hillshade) MAP DATA: July, 2008

FIG. NO:
K-8



OVERVIEW MAP



LEGEND

Probabilistic Seismic Hazard Model Earthquake Shaking Potential

These regions are near major, active faults and will on average experience stronger earthquake shaking more frequently. This intense shaking can damage even strong, modern buildings.

These regions are distant from known, active faults and will experience lower levels of shaking less frequently. In most earthquakes, only weaker, masonry buildings would be damaged. However, very infrequent earthquakes could still cause strong shaking here.

Perceived Shaking	Peak Acceleration (%g)

↑ Increasing Intensity

- Quaternary Fault
- ▲ City
- County Boundary
- Major Road or Highway
- City Limits

**REGIONAL EARTHQUAKE FAULTS
YAMHILL COUNTY
HAZARD MITIGATION PLAN**

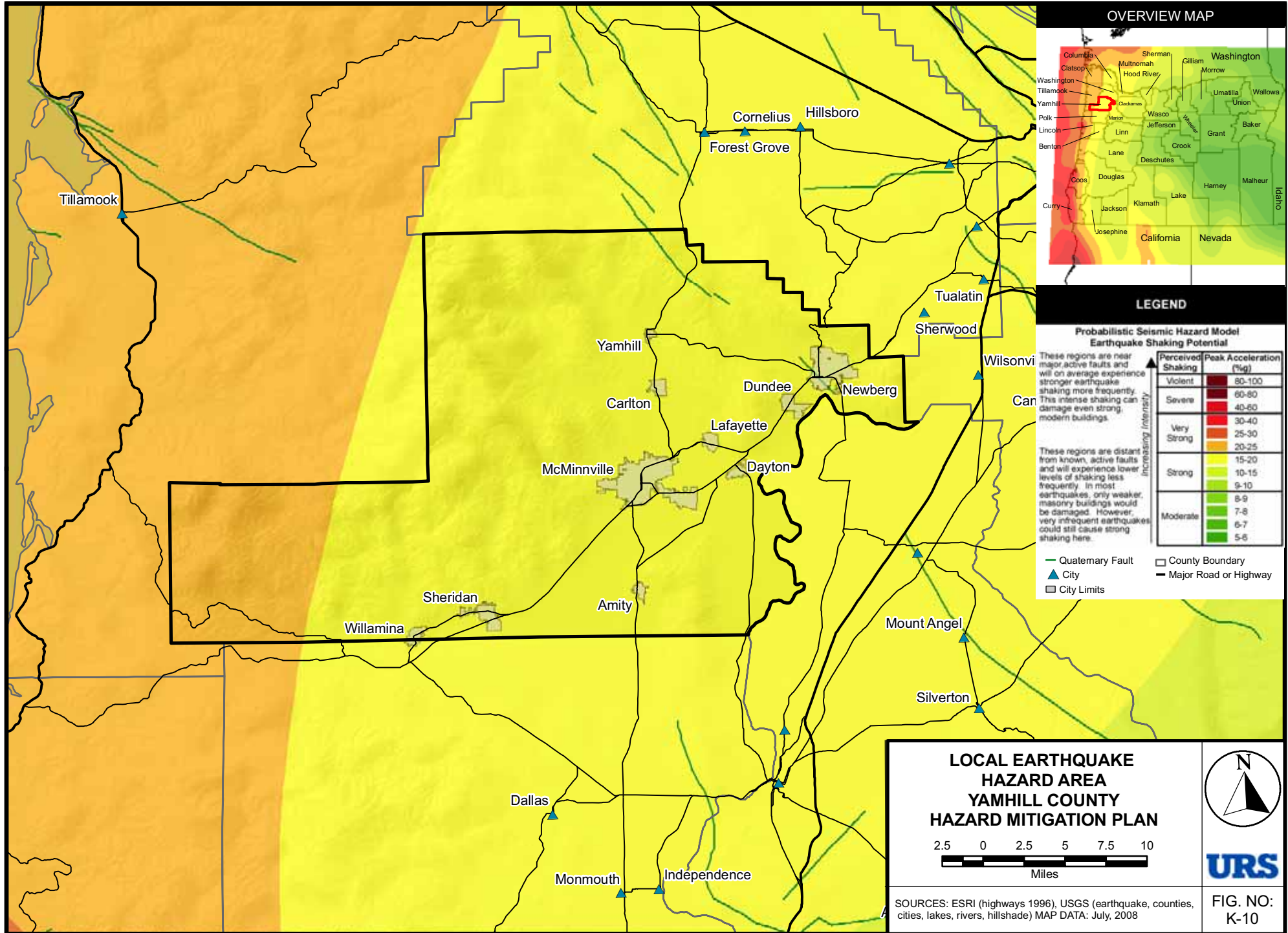
10 0 10

Miles

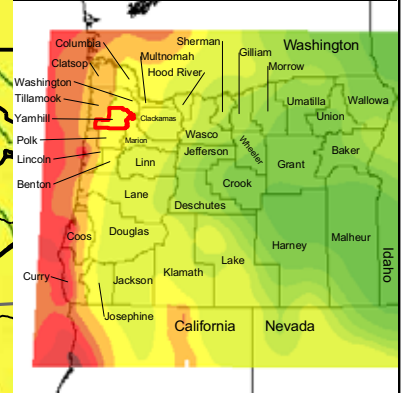
URS

SOURCES: ESRI (highways 1996), USGS (earthquake, counties, cities, lakes, rivers, hillshade) MAP DATA: July, 2008

**FIG. NO:
K-9**



OVERVIEW MAP



LEGEND

**Probabilistic Seismic Hazard Model
Earthquake Shaking Potential**

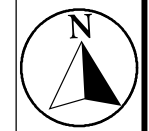
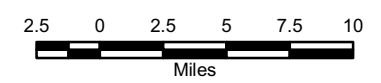
These regions are near major active faults and will on average experience stronger earthquake shaking more frequently. This intense shaking can damage even strong, modern buildings.

These regions are distant from known, active faults and will experience lower levels of shaking less frequently. In most earthquakes, only weaker, masonry buildings would be damaged. However, very infrequent earthquakes could still cause strong shaking here.

Perceived Shaking	Peak Acceleration (%g)
Severe	60-80
Very Strong	40-60
Strong	30-40
	25-30
	20-25
	15-20
	10-15
	9-10
	8-9
Moderate	7-8
	6-7
	5-6

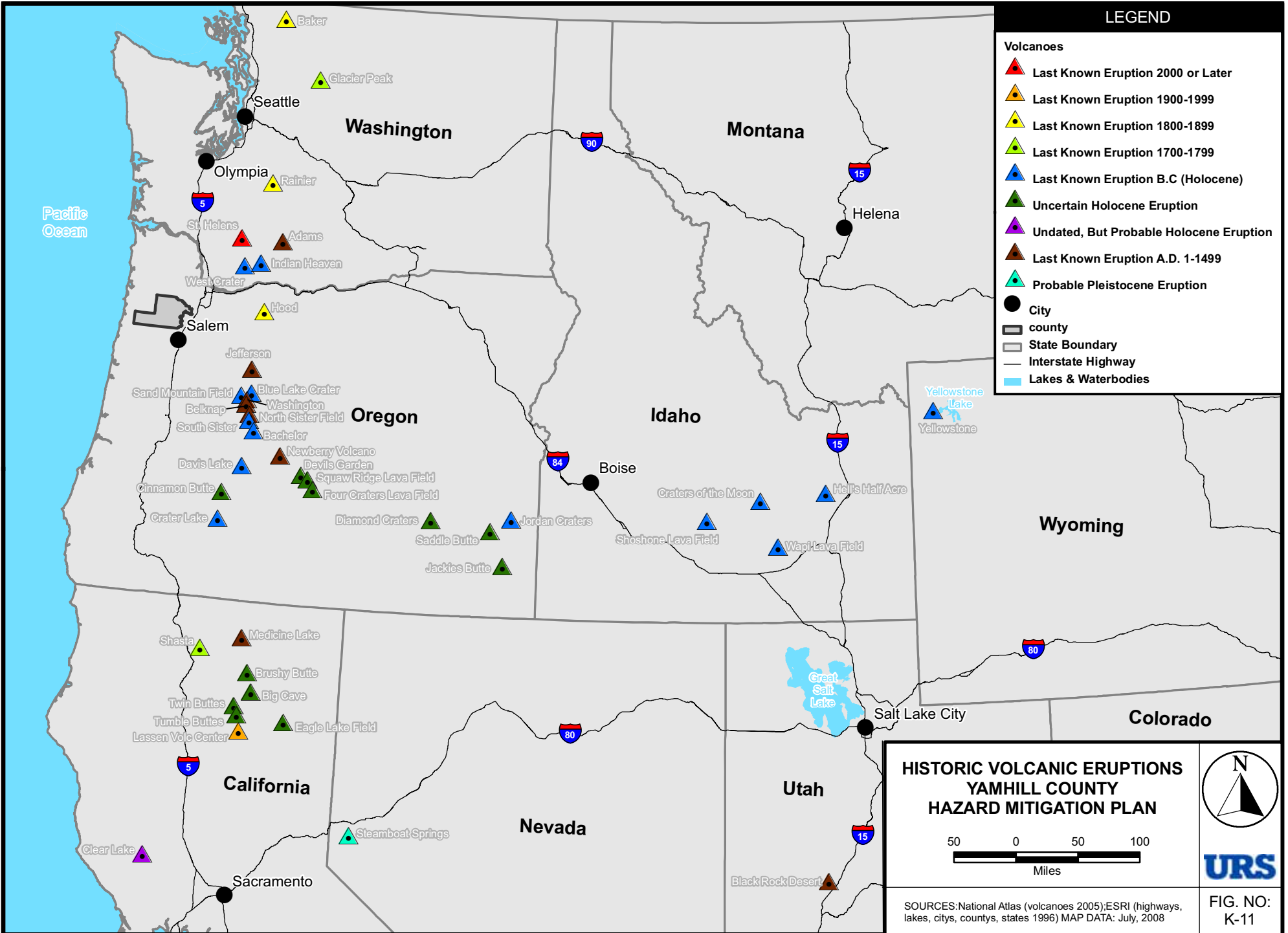
— Quaternary Fault County Boundary
▲ City Major Road or Highway
 City Limits

**LOCAL EARTHQUAKE
HAZARD AREA
YAMHILL COUNTY
HAZARD MITIGATION PLAN**

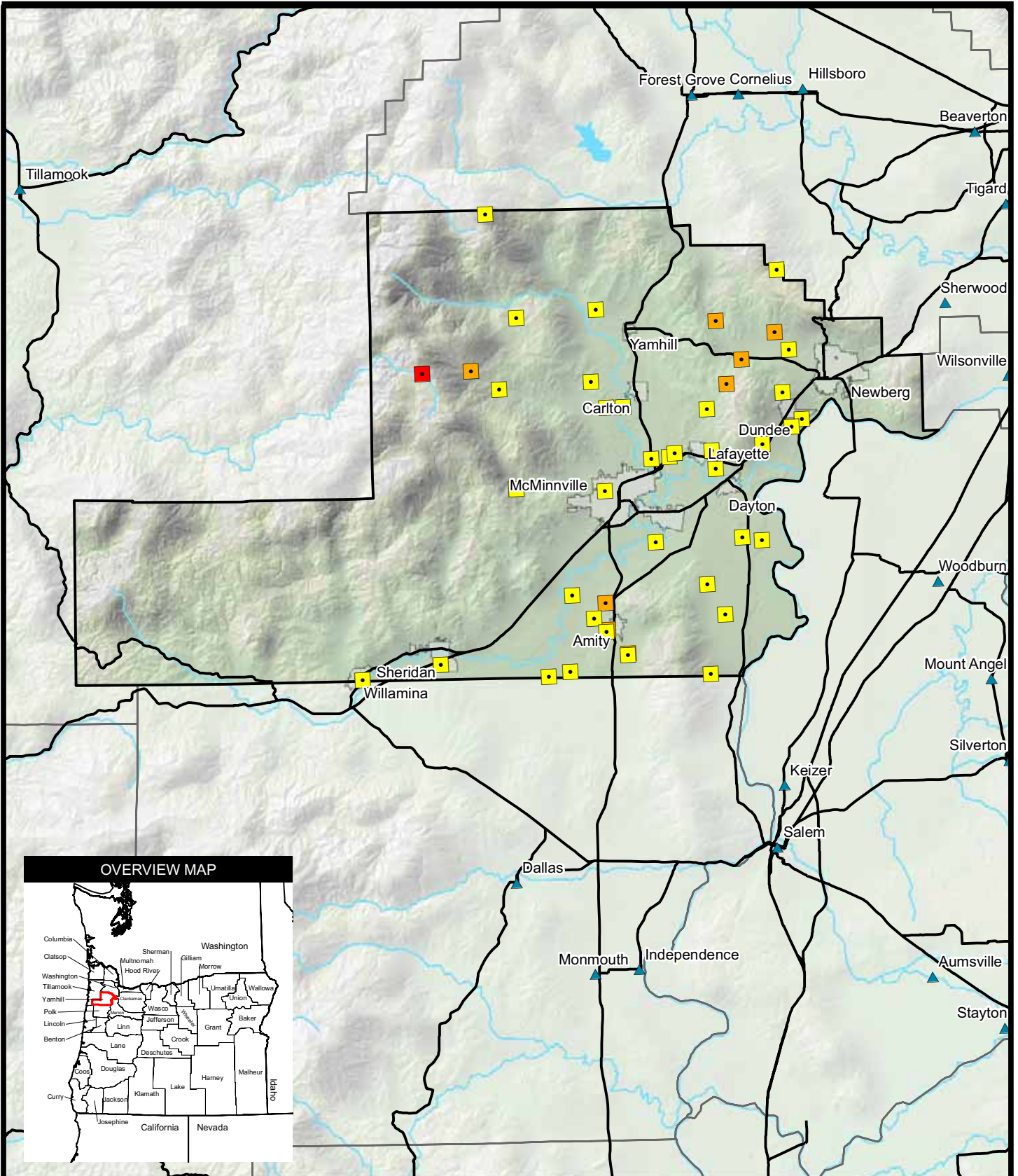


SOURCES: ESRI (highways 1996), USGS (earthquake, counties, cities, lakes, rivers, hillshade) MAP DATA: July, 2008

**FIG. NO:
K-10**



M:\PROJECTS\2008\15300293 - FEMA - OREGON HAZARD MITIGATION PLANNING\MXD\YAMHILL\FIGURE K-12 - DAM LOCATIONS.MXD



LEGEND

- | | |
|--------------------|--------------------------------|
| Dam Hazard | City |
| High | City Limits |
| Low | County Boundary |
| Significant | Major Road or Highway |
| | Streams & Waterways |
| | Lakes & Waterbodies |

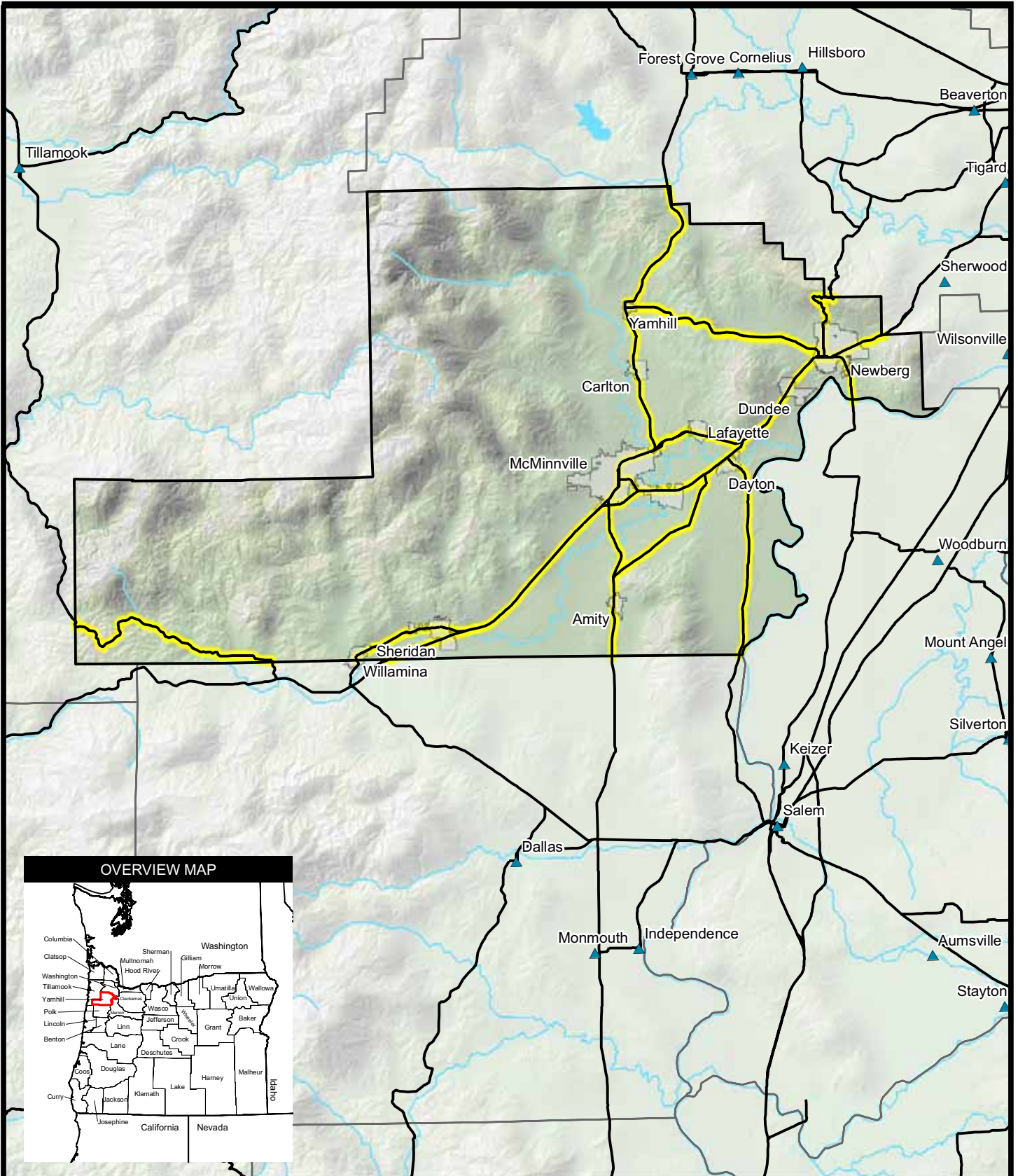
**DAM LOCATIONS
YAMHILL COUNTY
HAZARD MITIGATION PLAN**

5 0 5 10
Miles



SOURCES: Dam Hazards (OWRD, 2007), ESRI (highways 1996), USGS (counties, cities, lakes, rivers, hillshade)
MAP DATA: July, 2008

FIG. NO:
K-12



LEGEND

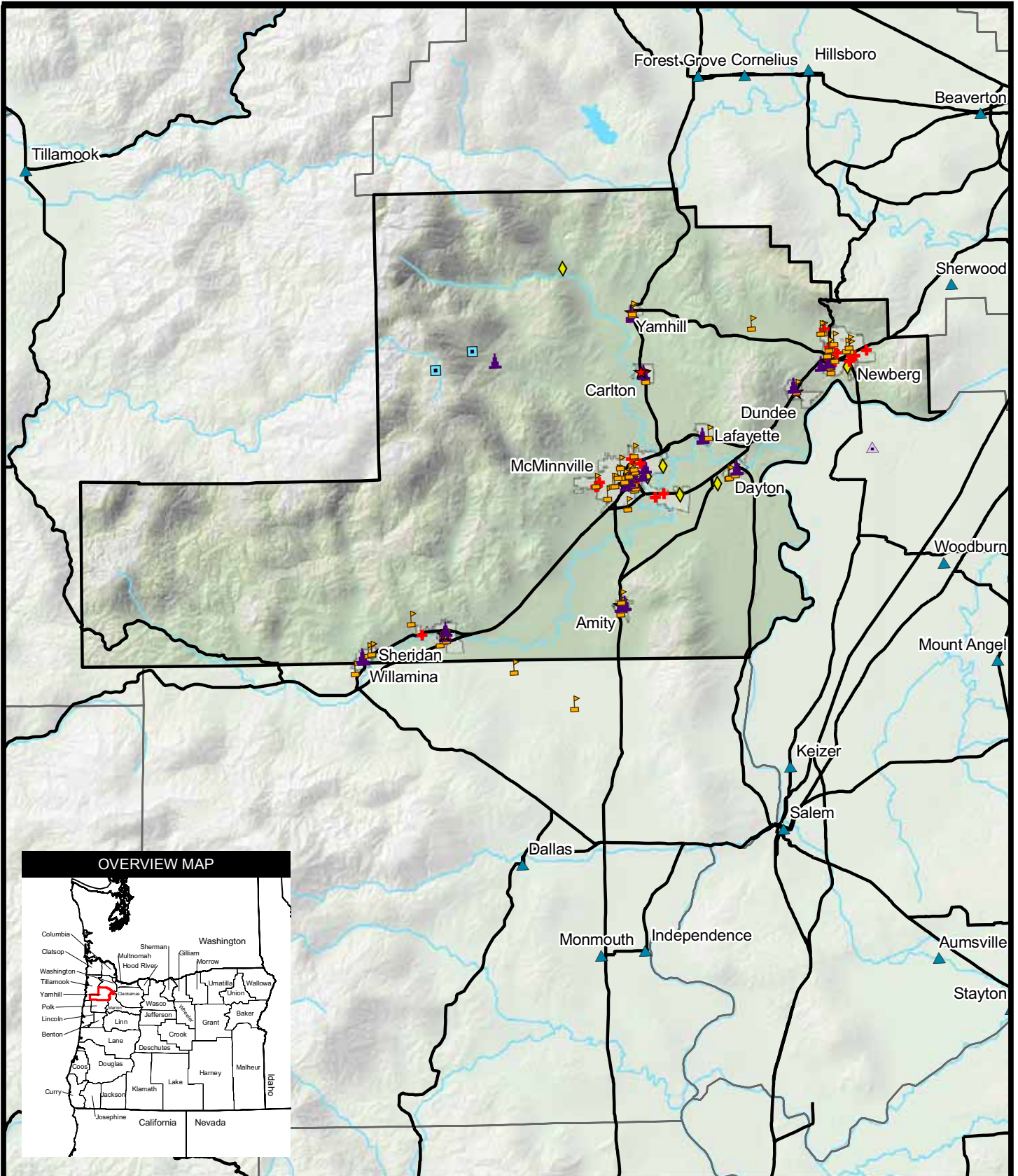
Hazardous Materials Transport	□ County Boundary
■ Quarter Mile Corridor	— Major Road or Highway
▲ City	~ Streams & Waterways
□ City Limits	☪ Lakes & Waterbodies

**HAZARDOUS MATERIALS
YAMHILL COUNTY
HAZARD MITIGATION PLAN**

5 0 5 10
Miles

SOURCES: ESRI (highways 1996), USGS (counties, cities, lakes, rivers, hillshade) MAP DATA: July, 2008

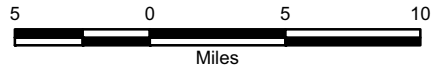
**FIG. NO:
K-13**



LEGEND

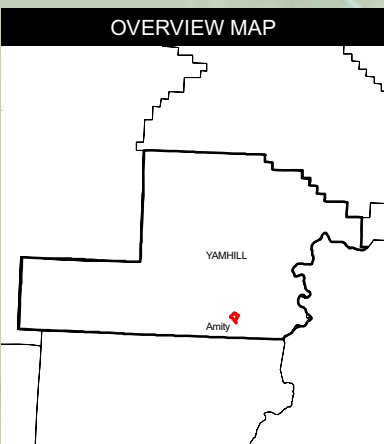
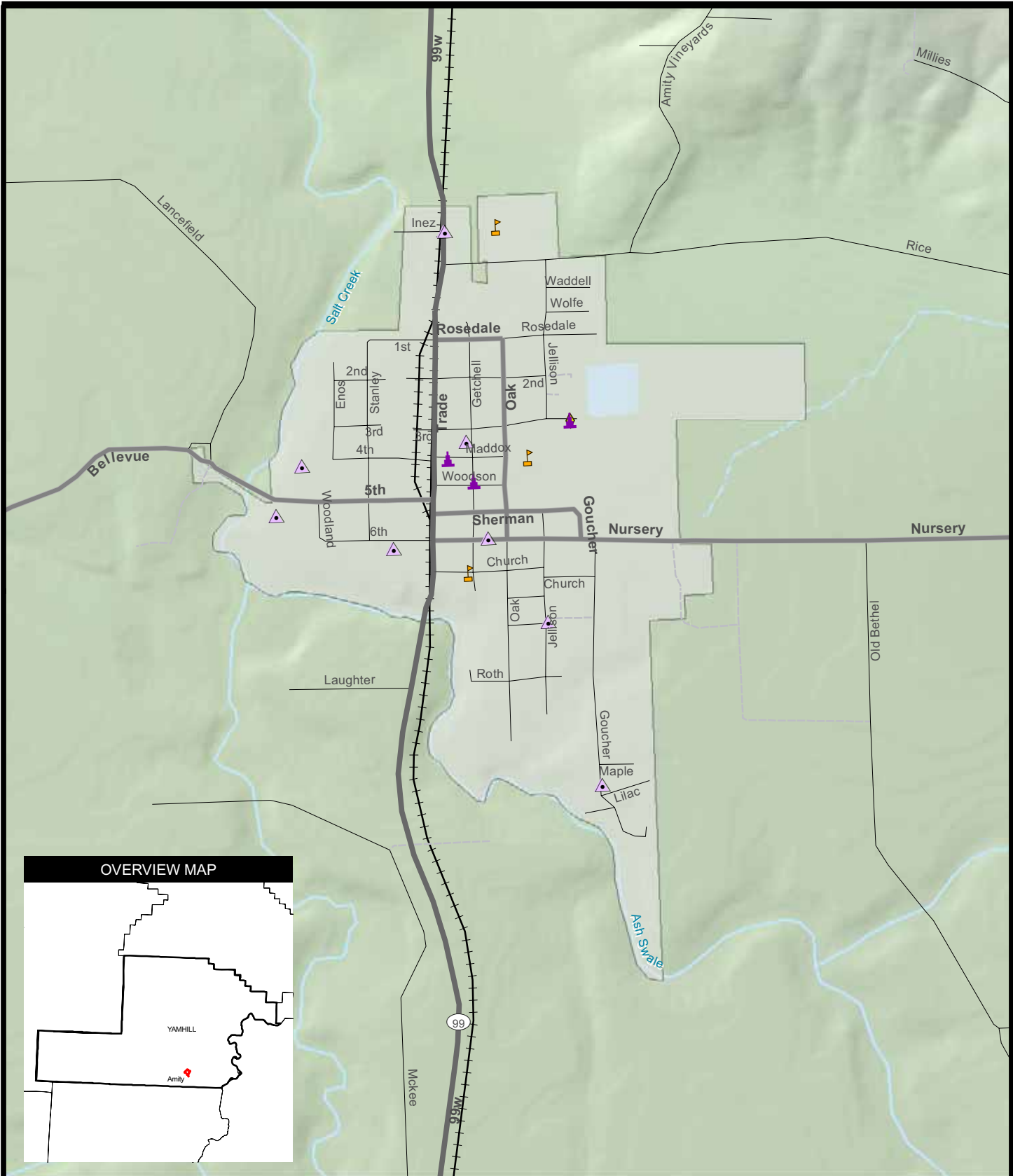
- | | |
|--------------------|-----------------------|
| Care | City |
| Community | City Limits |
| Dams | County Boundary |
| Education | Major Road or Highway |
| Emergency Response | Streams & Waterways |
| Government | Lakes & Waterbodies |
| Railroad | |
| Utilities | |

**CRITICAL FACILITIES
YAMHILL COUNTY
HAZARD MITIGATION PLAN**



SOURCES: Critical facilities (Oregon), ESRI (highways 1996), USGS (counties, cities, lakes, rivers, hillshade) MAP DATA: July, 2008

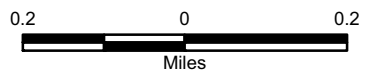
FIG. NO:
K-14



LEGEND

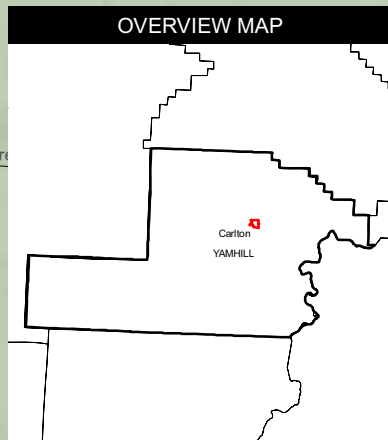
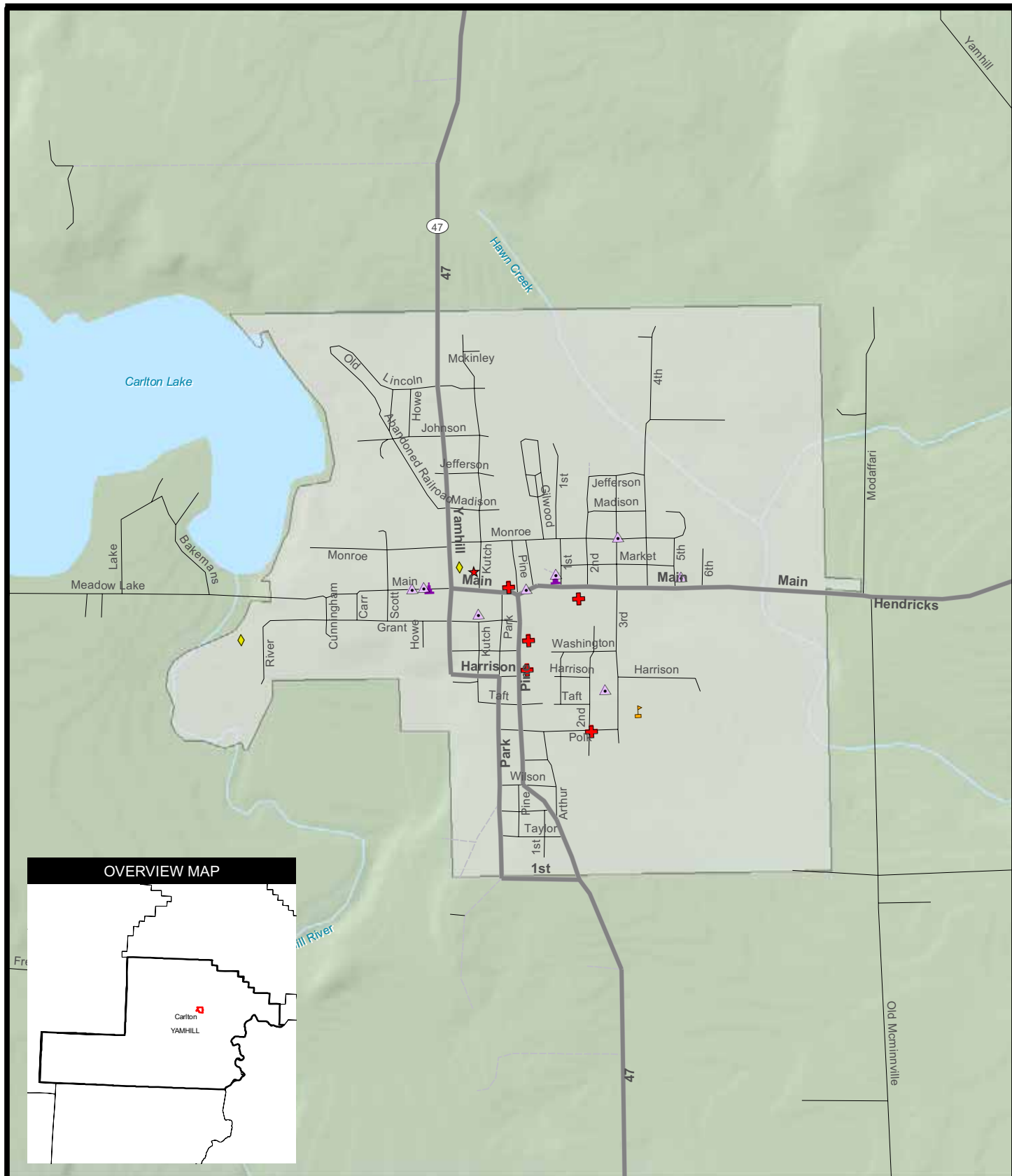
- | | | | |
|--|------------|--|----------------------|
| | Care | | City Limits |
| | Community | | Streets and Highways |
| | Education | | Railroad |
| | Government | | Streams & Waterways |
| | Railroad | | Lakes & Waterbodies |
| | Utilities | | |

**CITY OF AMITY
CRITICAL FACILITIES
YAMHILL COUNTY
HAZARD MITIGATION PLAN**



SOURCES: Critical facilities (City of Amity), ESRI (highways 1996), USGS (counties, cities, lakes, rivers, hillshade) MAP DATA: July, 2008

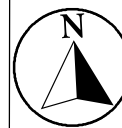
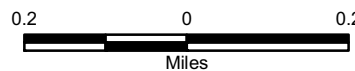
FIG. NO:
K-15



LEGEND

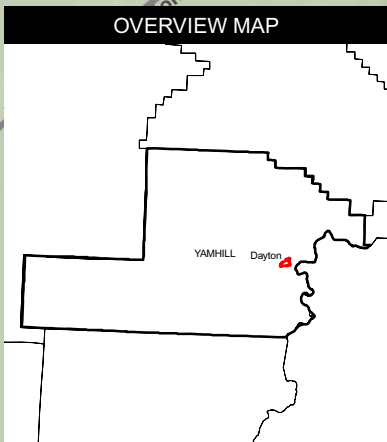
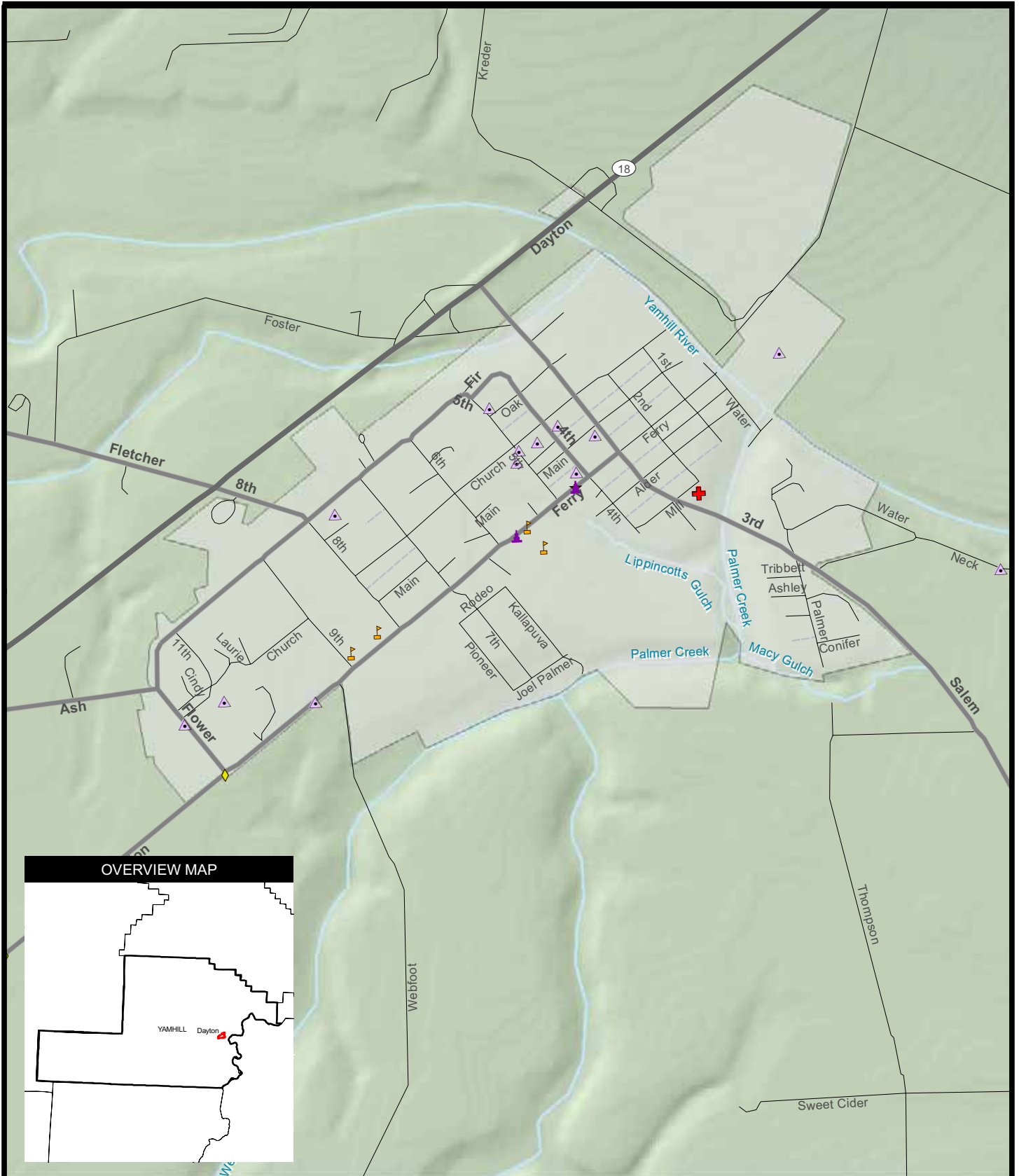
- | | | | |
|--|--------------------|--|----------------------|
| | Care | | City Limits |
| | Community | | Streets and Highways |
| | Dams | | Streams & Waterways |
| | Education | | Lakes & Waterbodies |
| | Emergency Response | | |
| | Government | | |
| | Utilities | | |

**CITY OF CARLTON
CRITICAL FACILITIES
YAMHILL COUNTY
HAZARD MITIGATION PLAN**



SOURCES: Critical facilities (City of Carlton), ESRI (highways 1996), USGS (counties, cities, lakes, rivers, hillshade) MAP DATA: July, 2008

FIG. NO:
K-16



LEGEND

- + Care
- ▲ Community
- ▲ Education
- ★ Emergency Response
- ▲ Government
- ◆ Utilities
- City Limits
- Streets and Highways
- Lakes & Waterbodies
- Streams & Waterways

**CITY OF DAYTON
CRITICAL FACILITIES
YAMHILL COUNTY
HAZARD MITIGATION PLAN**

0.2 0 0.2
Miles

SOURCES: Critical facilities (City of Dayton), ESRI (highways 1996), USGS (counties, cities, lakes, rivers, hillshade) MAP DATA: July, 2008

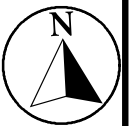
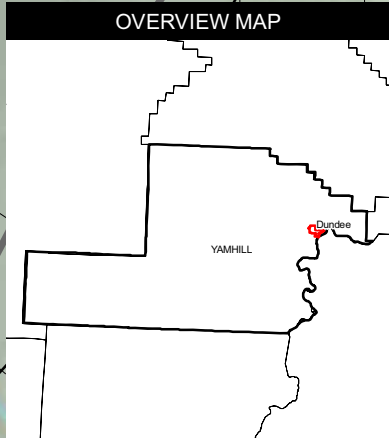
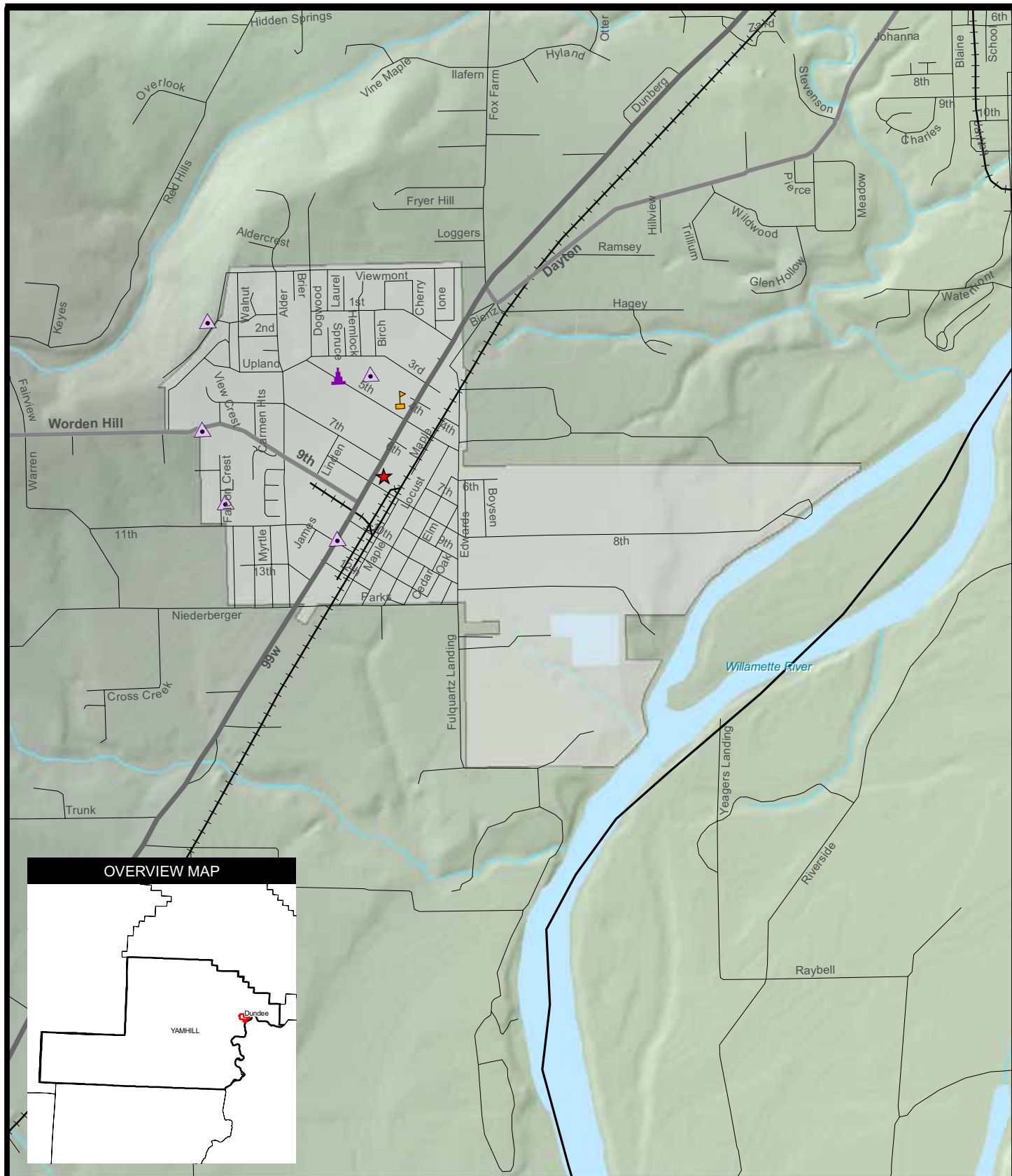












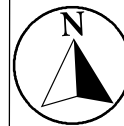
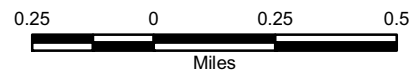
FIG. NO:
K-17



LEGEND

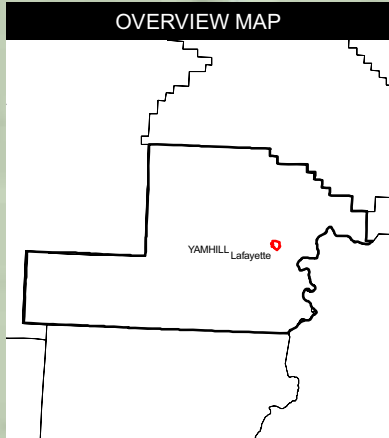
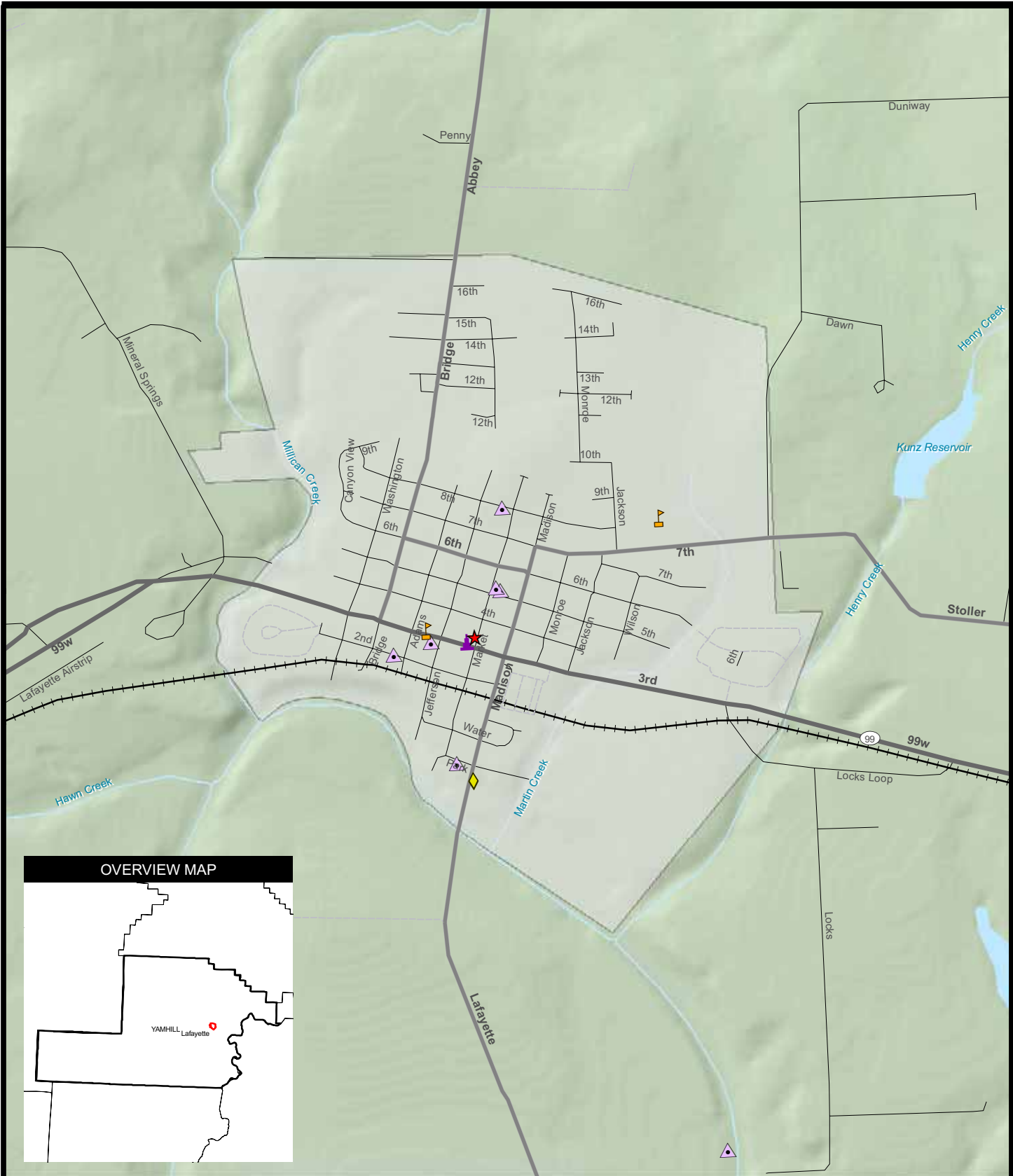
- | | | | |
|---|---------------------------|---|--------------------------------|
|  | Community |  | City Limits |
|  | Education |  | Streets and Highways |
|  | Emergency Response |  | Railroad |
|  | Government |  | Streams & Waterways |
|  | Utilities |  | Lakes & Waterbodies |

**CITY OF DUNDEE
CRITICAL FACILITIES
YAMHILL COUNTY
HAZARD MITIGATION PLAN**






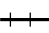






SOURCES: Critical facilities (City of Dundee), ESRI (highways 1996), USGS (counties, cities, lakes, rivers, hillshade) MAP DATA: July, 2008

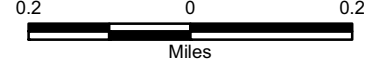
FIG. NO:
K-18



LEGEND

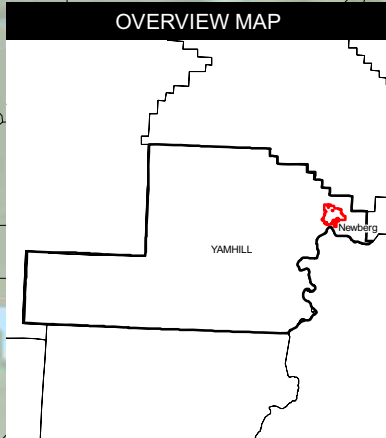
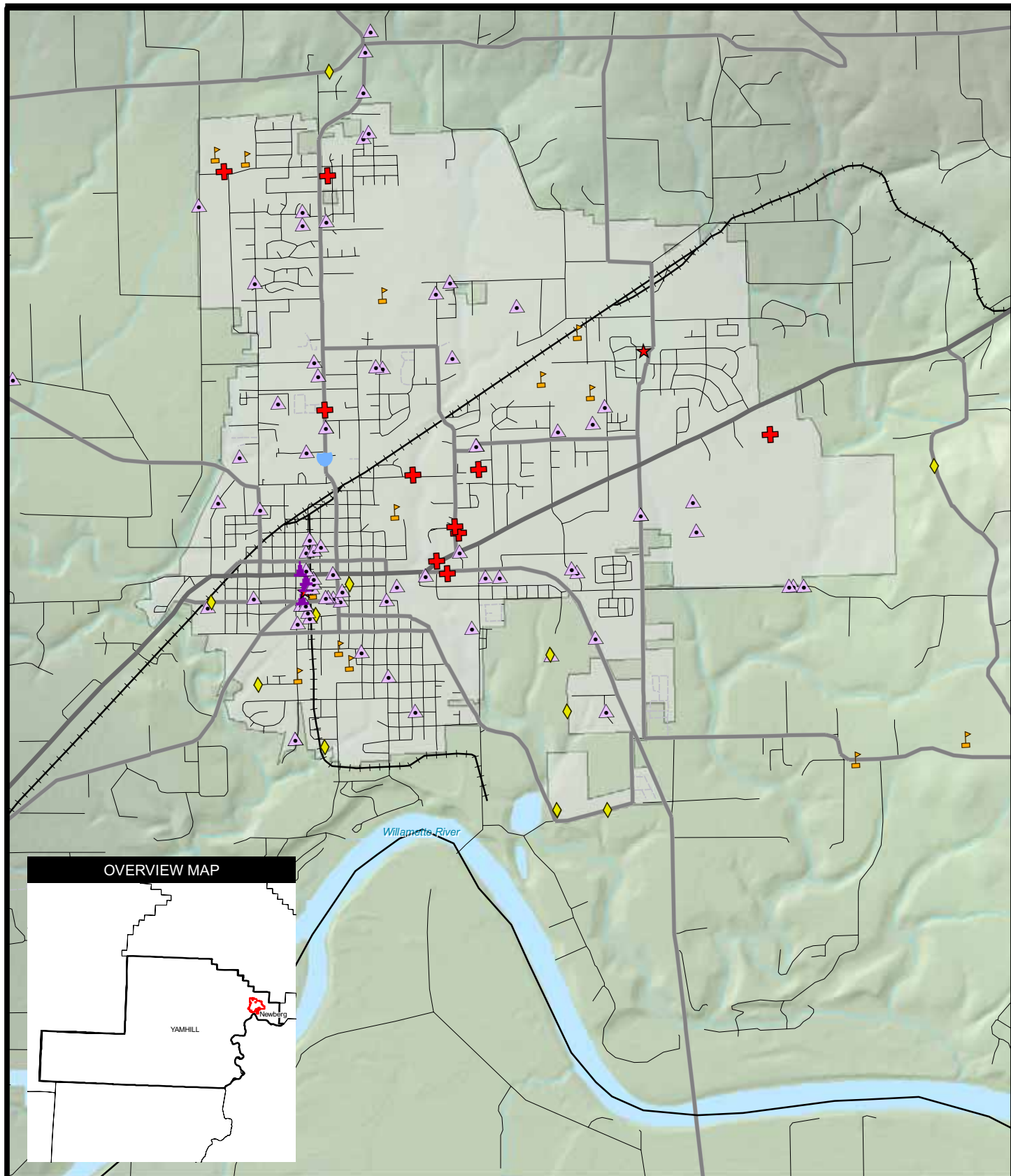
- | | |
|--|--|
|  Community |  City Limits |
|  Education |  Streets and Highways |
|  Emergency Response |  Railroad |
|  Government |  Streams & Waterways |
|  Utilities |  Lakes & Waterbodies |

**CITY OF LAFAYETTE
CRITICAL FACILITIES
YAMHILL COUNTY
HAZARD MITIGATION PLAN**



SOURCES: Critical facilities (City of Lafayette), ESRI (highways 1996), USGS (counties, cities, lakes, rivers, hillshade) MAP DATA: July, 2008

FIG. NO:
K-19



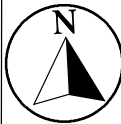
LEGEND

- | | | |
|--------------------|---------------------|----------------------|
| Care | Government | City Limits |
| Community | Highways | Streets and Highways |
| Education | Utilities | Railroad |
| Emergency Response | Lakes & Waterbodies | Streams & Waterways |

**CITY OF NEWBERG
CRITICAL FACILITIES
YAMHILL COUNTY
HAZARD MITIGATION PLAN**

0.5 0 0.5

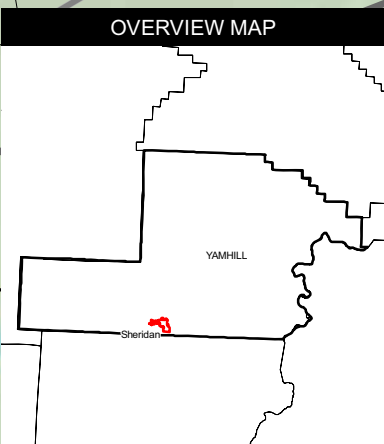
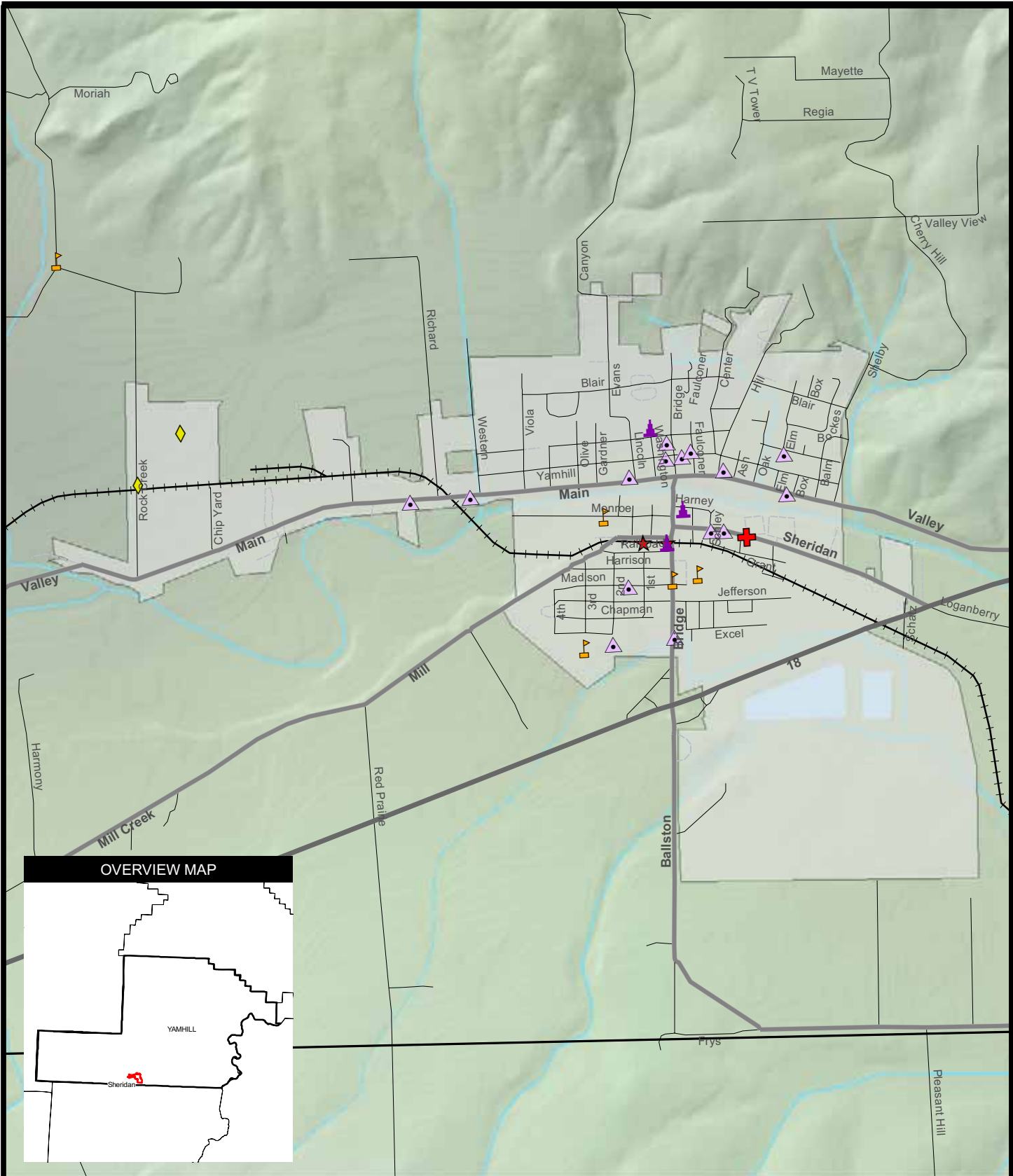
Miles



SOURCES: Critical facilities (City of Newberg, ESRI (highways 1996), USGS (counties, cities, lakes, rivers, hillshade) MAP DATA: July, 2008

FIG. NO:
K-20

M:\PROJECTS\2008\15300293 - FEMA - OREGON HAZARD MITIGATION PLANNING\MXD\YAMHILL\FIGURE K-21 - CITY OF SHERIDAN CRITICAL FACILITIES.MXD



LEGEND

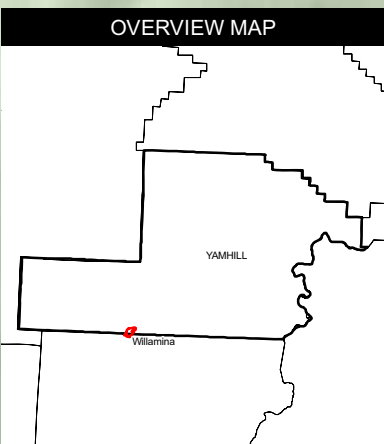
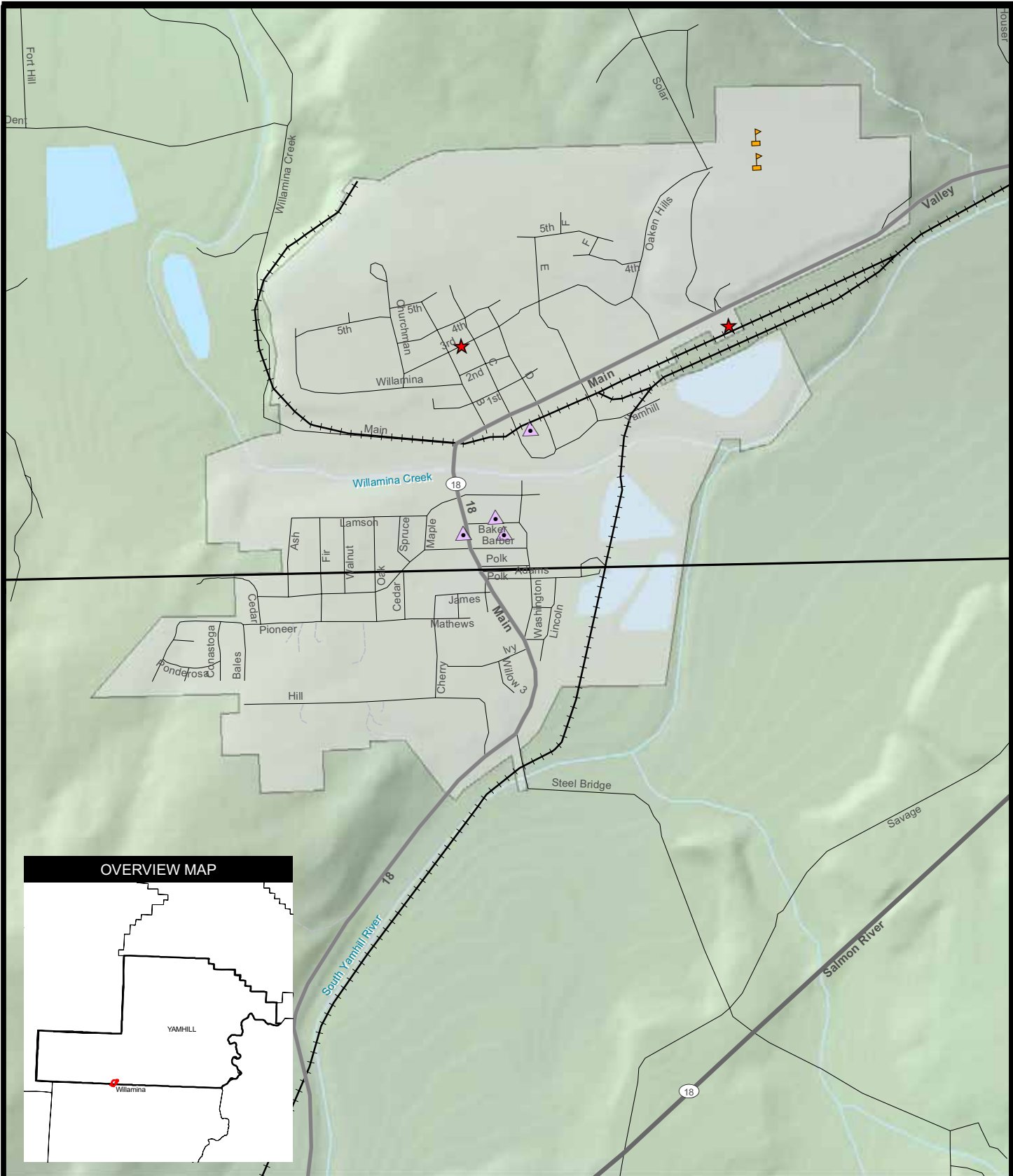
- | | | | | | |
|--|--------------------|--|---------------------|--|----------------------|
| | Care | | Government | | City Limits |
| | Community | | Railroad | | Streets and Highways |
| | Education | | Utilities | | Railroad |
| | Emergency Response | | Streams & Waterways | | Lakes & Waterbodies |

**CITY OF SHERIDAN
CRITICAL FACILITIES
YAMHILL COUNTY
HAZARD MITIGATION PLAN**

0.25 0 0.25 0.5
Miles

SOURCES: Critical facilities (City of Sheridan), ESRI (highways 1996), USGS (counties, cities, lakes, rivers, hillshade) MAP DATA: July, 2008

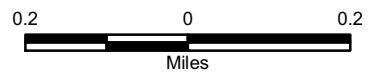
FIG. NO:
K-21



LEGEND

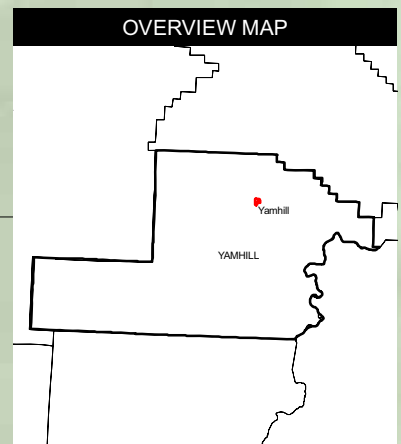
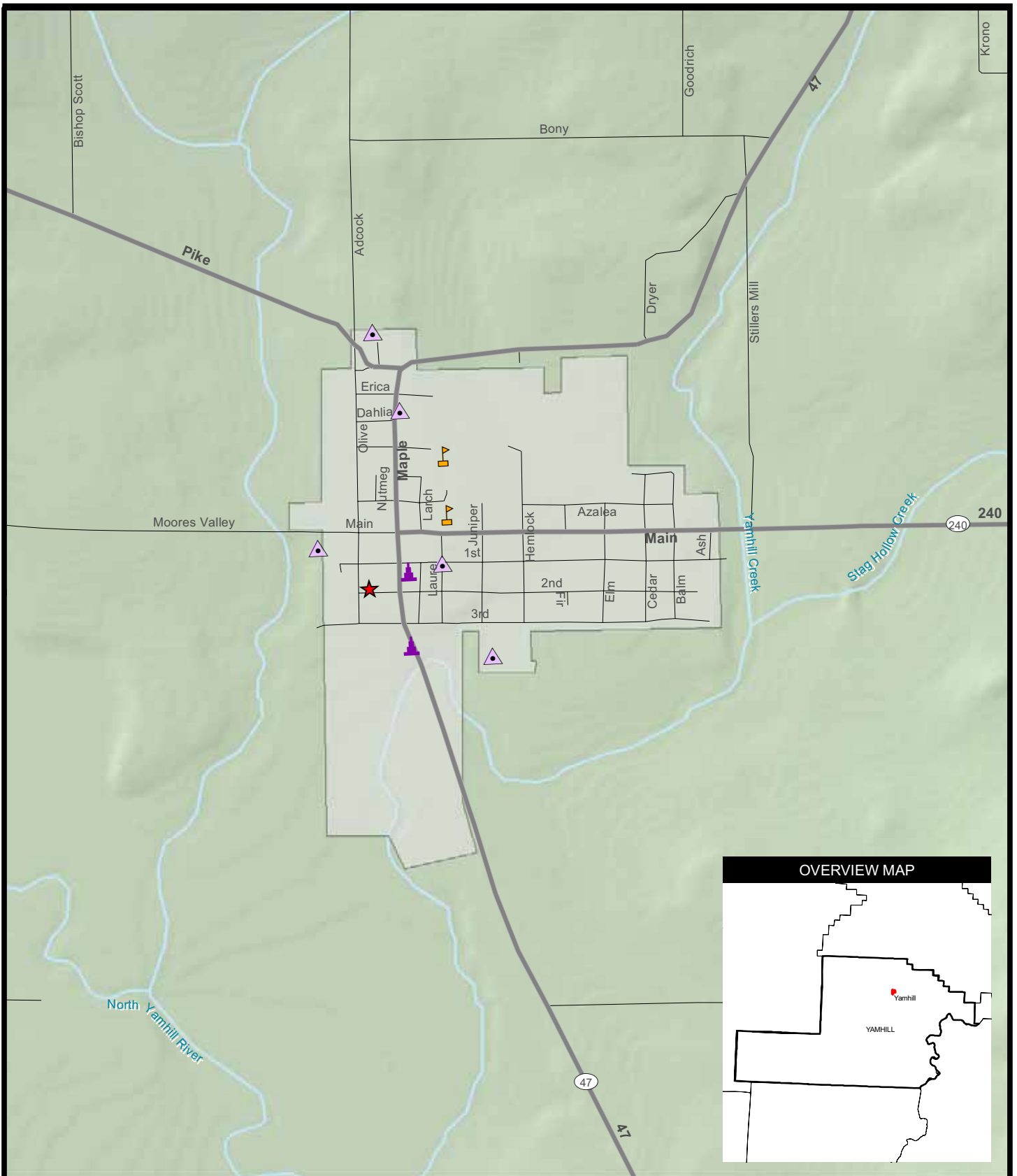
- Community
- Education
- Emergency Response
- City Limits
- Streets and Highways
- Railroad
- Streams & Waterways
- Lakes & Waterbodies

**CITY OF WILLAMINA
CRITICAL FACILITIES
YAMHILL COUNTY
HAZARD MITIGATION PLAN**











SOURCES: Critical facilities (City of Willamina), ESRI (highways 1996), USGS (counties, cities, lakes, rivers, hillshade) MAP DATA: July, 2008

FIG. NO:
K-22

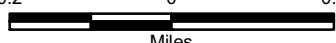


LEGEND

- | | |
|---|--|
|  Community |  City Limits |
|  Education |  Streets and Highways |
|  Emergency Response |  Streams & Waterways |
|  Government |  Lakes & Waterbodies |

**YAMHILL CITY
CRITICAL FACILITIES
YAMHILL COUNTY
HAZARD MITIGATION PLAN**

0.2 0 0.2



Miles



URS

SOURCES: Critical facilities (Yamhill City), ESRI (highways 1996), USGS (counties, cities, lakes, rivers, hillshade) MAP DATA: July, 2008

**FIG. NO:
K-23**