



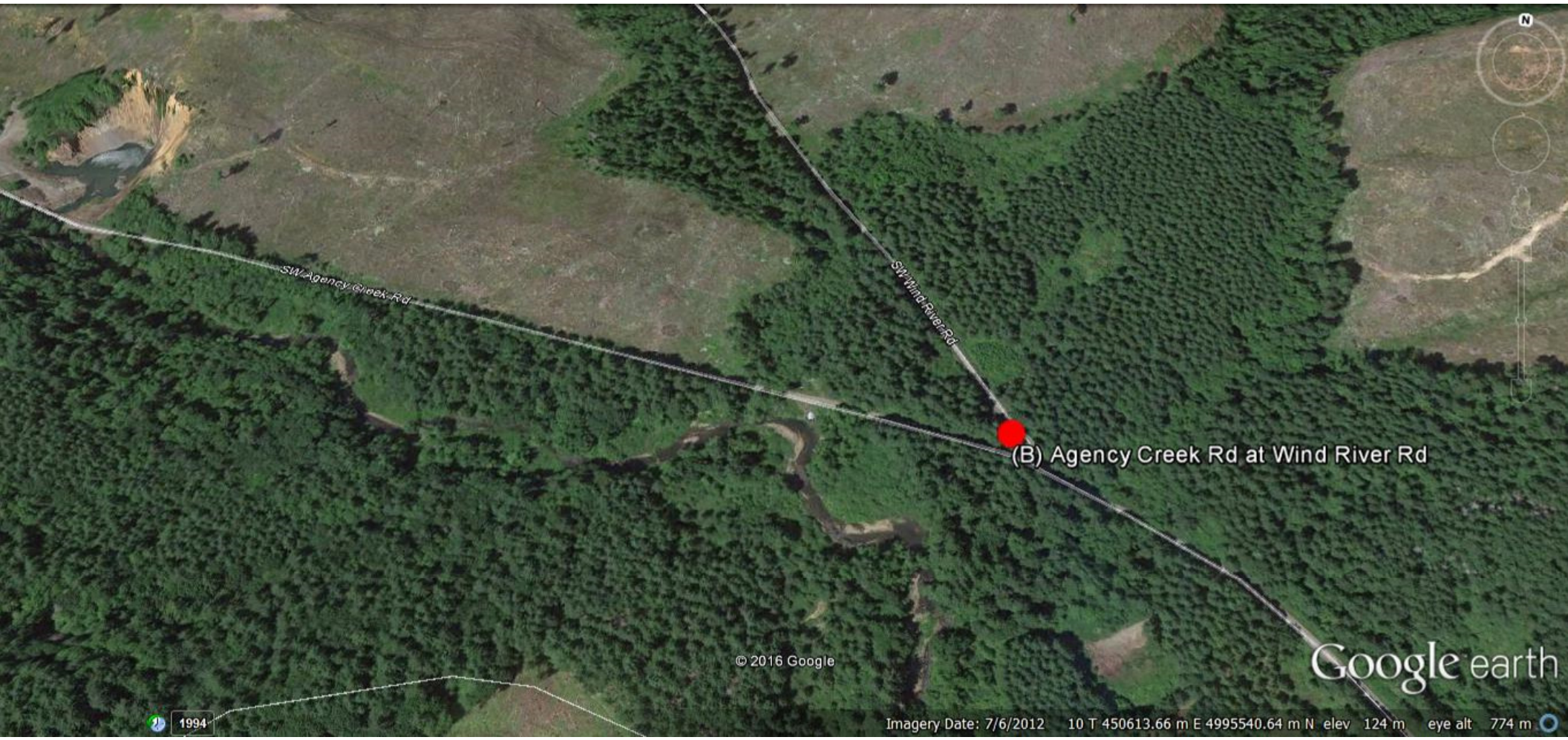
(A) Hampton Lumber Mill - Willamina Creek Rd

© 2016 Google

Google earth

1994

Imagery Date: 7/14/2014 10 T 461238.08 m E 4991853.86 m N elev 77 m eye alt 616 m



SW Agency Creek Rd

SW Wind River Rd

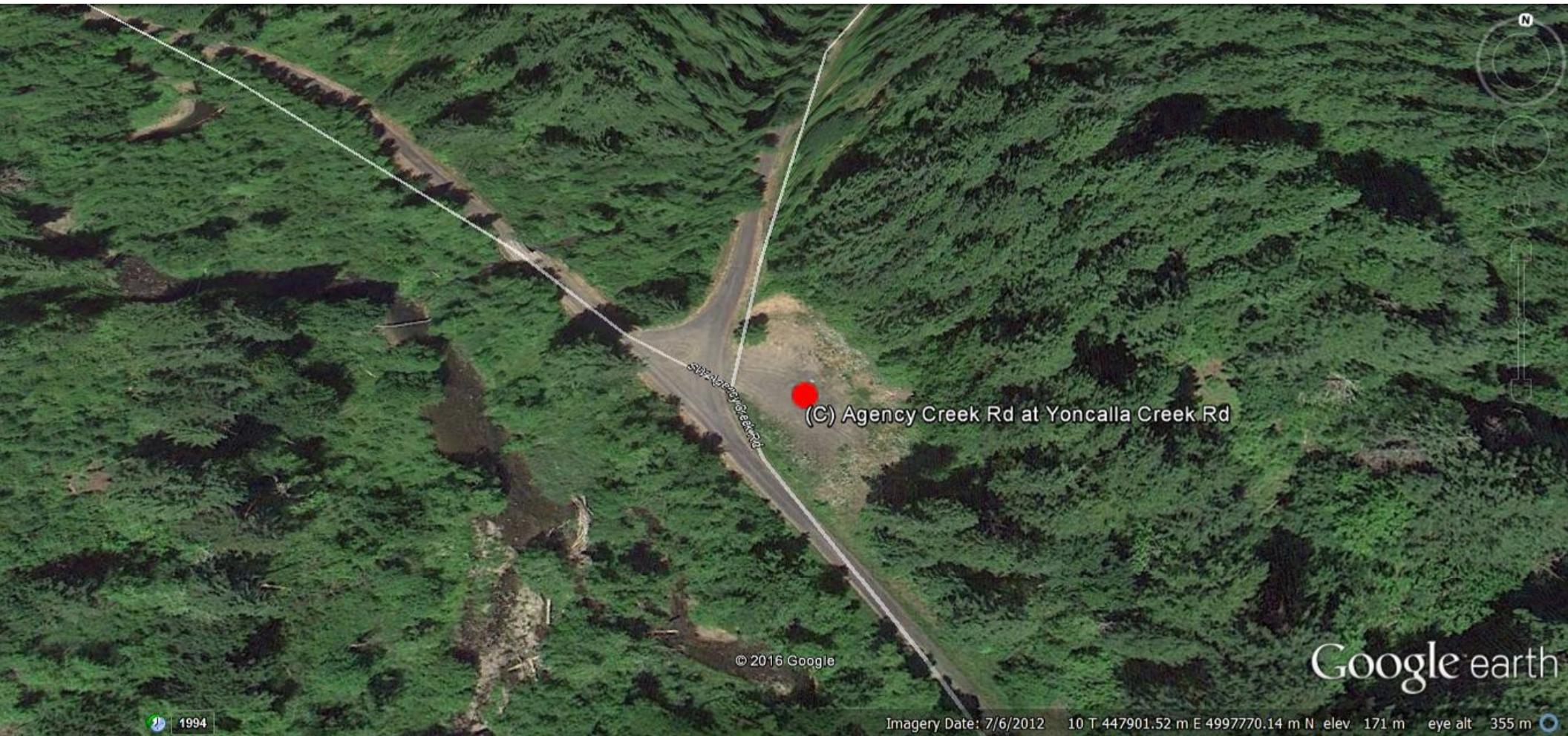
(B) Agency Creek Rd at Wind River Rd

© 2016 Google

Google earth

1994

Imagery Date: 7/6/2012 10 T 450613.66 m E 4995540.64 m N elev 124 m eye alt 774 m



SW Agency Creek Rd

(C) Agency Creek Rd at Yoncalla Creek Rd

© 2016 Google

Google earth

1994

Imagery Date: 7/6/2012 10 T 447901.52 m E 4997770.14 m N elev. 171 m eye alt 355 m



(D) Agency Creek Rd at West Fork Agency Creek Rd

© 2016 Google

Google earth

1994

Imagery Date: 7/30/2014 10 T 445887.55 m E 4999971.27 m N elev 238 m eye alt 427 m



SW Little Hebo Rd

(E) Near Little Hebo Rd

© 2016 Google

Google earth

1994

Imagery Date: 7/30/2014 10 T 443286.15 m E 5001391.40 m N elev 442 m eye alt 1.18 km



(F) Near NF-14 Road

NF-14

© 2016 Google

Google earth

1994

Imagery Date: 7/6/2012 10 T 451949.86 m E 5006034.19 m N elev 498 m eye alt 745 m



(C) Gopher Valley Rd near Deer Creek Park Rd

Deer Creek Park Rd

Gopher Valley Rd

© 2016 Google

Google earth

Imagery Date: 7/6/2012 10 T 469940.83 m E 5001030.65 m N elev. 108 m eye alt 536 m

1994





(H) Camp Cooper

Camp Cooper Reservoir

Reservoir Creek Road

Professor's Lane

© 2016 Google

Google earth

1994

Imagery Date: 7/6/2012 10 T 460500.26 m E 5010631.87 m N elev 671 m eye alt 1.50 km



(I) Elk Flat Rd at Bald Mountain Access Rd

© 2016 Google

Google earth

1994

Imagery Date: 7/6/2012 10 T 463396.69 m E 5012650.86 m N elev 737 m eye alt 1.10 km



(J) Off of Bald Mountain Access Rd

© 2016 Google

Google earth

1994

Imagery Date: 7/6/2012 10 T 464165.78 m E 5014165.81 m N elev 907 m eye alt 1.05 km



NW Bald Mountain Access Rd

(K) Sheridan Peak Outlook - Bald Mountain Access Rd

© 2016 Google

Google earth

1994

Imagery Date: 7/6/2012 10 T 465349.68 m E 5014003.66 m N elev 874 m eye alt 1.07 km



Rainbow Lake

(L) Near Rainbow Lake - Baker Creek Rd

© 2016 Google

Google earth

1994

Imagery Date: 7/6/2012 10 T 473328.59 m E 5011065.36 m N elev 217 m eye alt 549 m



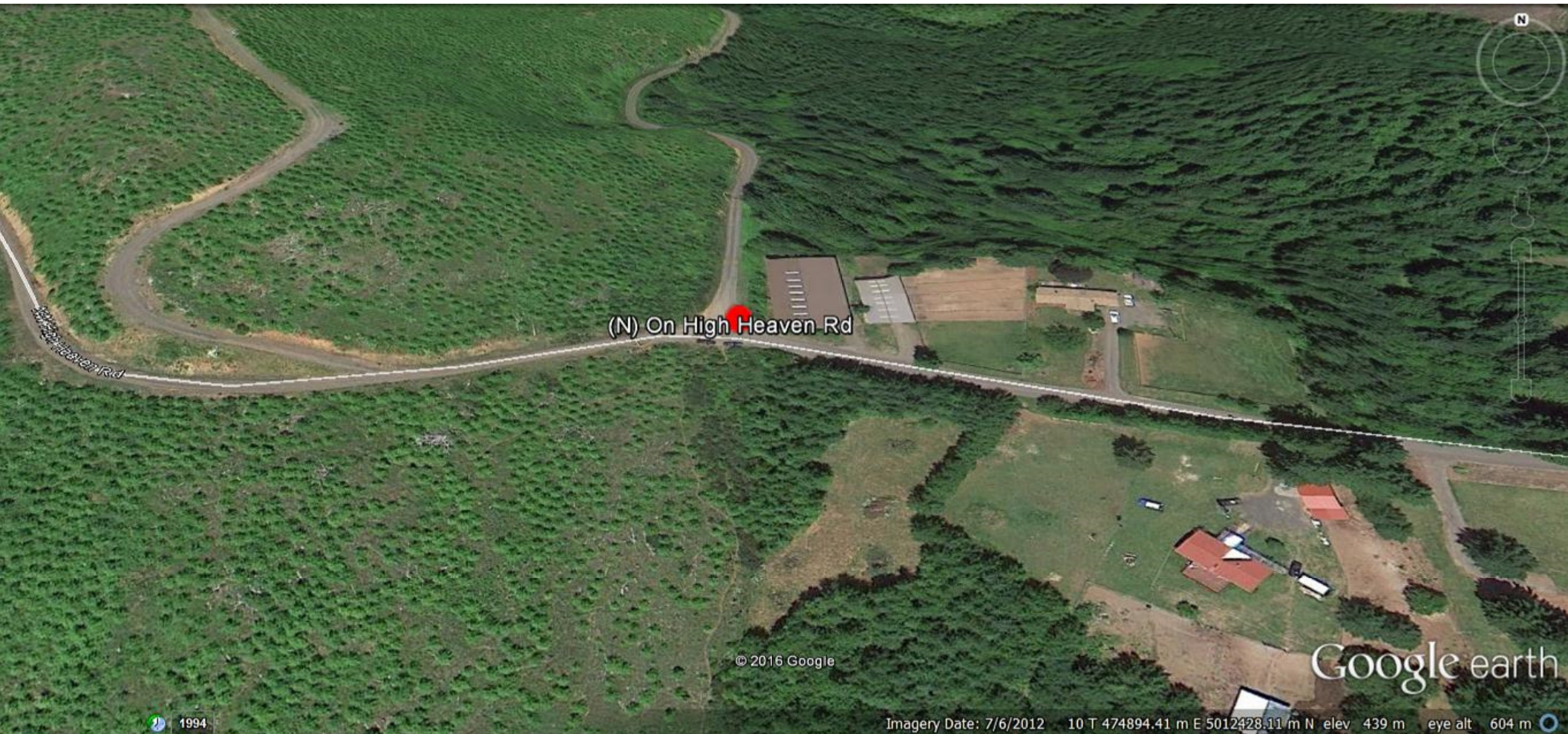
(M) On Baker Creek Rd

© 2016 Google

Google earth

1994

Imagery Date: 7/6/2012 10 T 473797.77 m E 5010850.12 m N elev 194 m eye alt 367 m



(N) On High Heaven Rd

© 2016 Google

Google earth

1994

Imagery Date: 7/6/2012 10 T 474894.41 m E 5012428.11 m N elev 439 m eye alt 604 m



(Q) Camp Smith Driveway at Willis Rd

NW Willis Rd

© 2016 Google

Google earth

74m

1994

Imagery Date: 7/6/2012 10 T 477473.51 m E 5012251.04 m N elev 264 m eye alt 531 m





NW Toll Rd

NW Fairdale + Greek Rd

NW Fairdale Rd

(P) Fairdale Rd at Toll Rd

© 2016 Google

Google earth

1994

Imagery Date: 7/6/2012 10 T 474215.85 m E 5023333.90 m N elev 118 m eye alt 490 m



(Q) Flying M Ranch - Airstrip

Flying M Reservoir

NW Mitchell Rd

NW Flying M Rd

© 2016 Google

Google earth

1994

Imagery Date: 7/6/2012 10 T 472112.25 m E 5023209.61 m N elev 137 m eye alt 654 m



(R)-Willamina Creek Rd at East Creek Rd

© 2016 Google

Google earth

1994

Imagery Date: 7/6/2012 10 T 460804.40 m E 5001433.08 m N elev. 113 m eye alt. 412 m



(S) McGuire Dam North

M-101 West Jocassee Rd

© 2016 Google

Google earth

1994

Imagery Date: 7/6/2012 10 T 468047.85 m E 5017502.67 m N elev 579 m eye alt 784 m



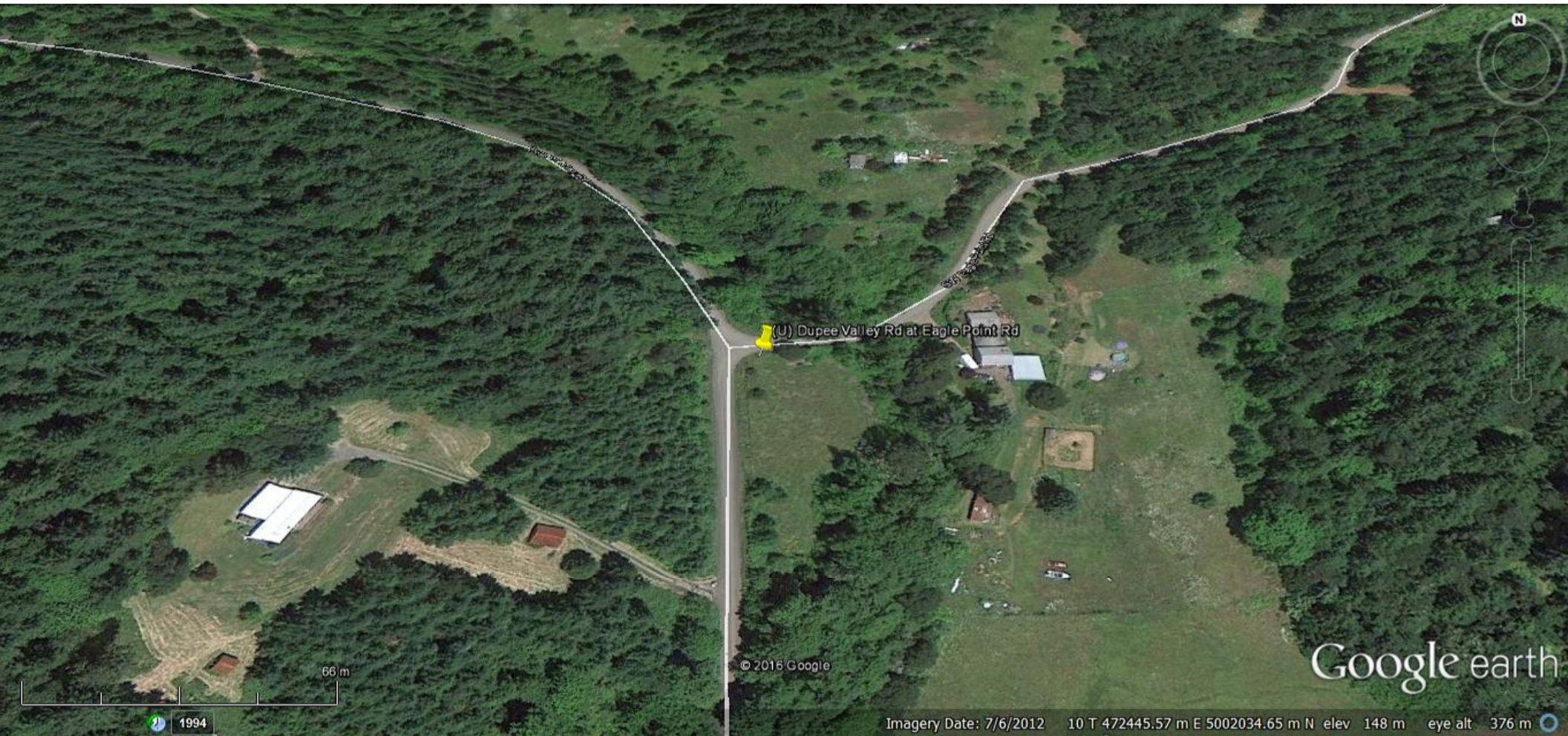
(T) McGuire Dam South

© 2016 Google

Google earth

1994

Imagery Date: 7/6/2012 10 T 469255.48 m E 5015040.94 m N elev 580 m eye alt 757 m



(U) Dupee Valley Rd at Eagle Point Rd

66 m

1994

© 2016 Google

Google earth

Imagery Date: 7/6/2012 10 T 472445.57 m E 5002034.65 m N elev 148 m eye alt 376 m



(V) Gopher Valley Rd at Peavine Rd

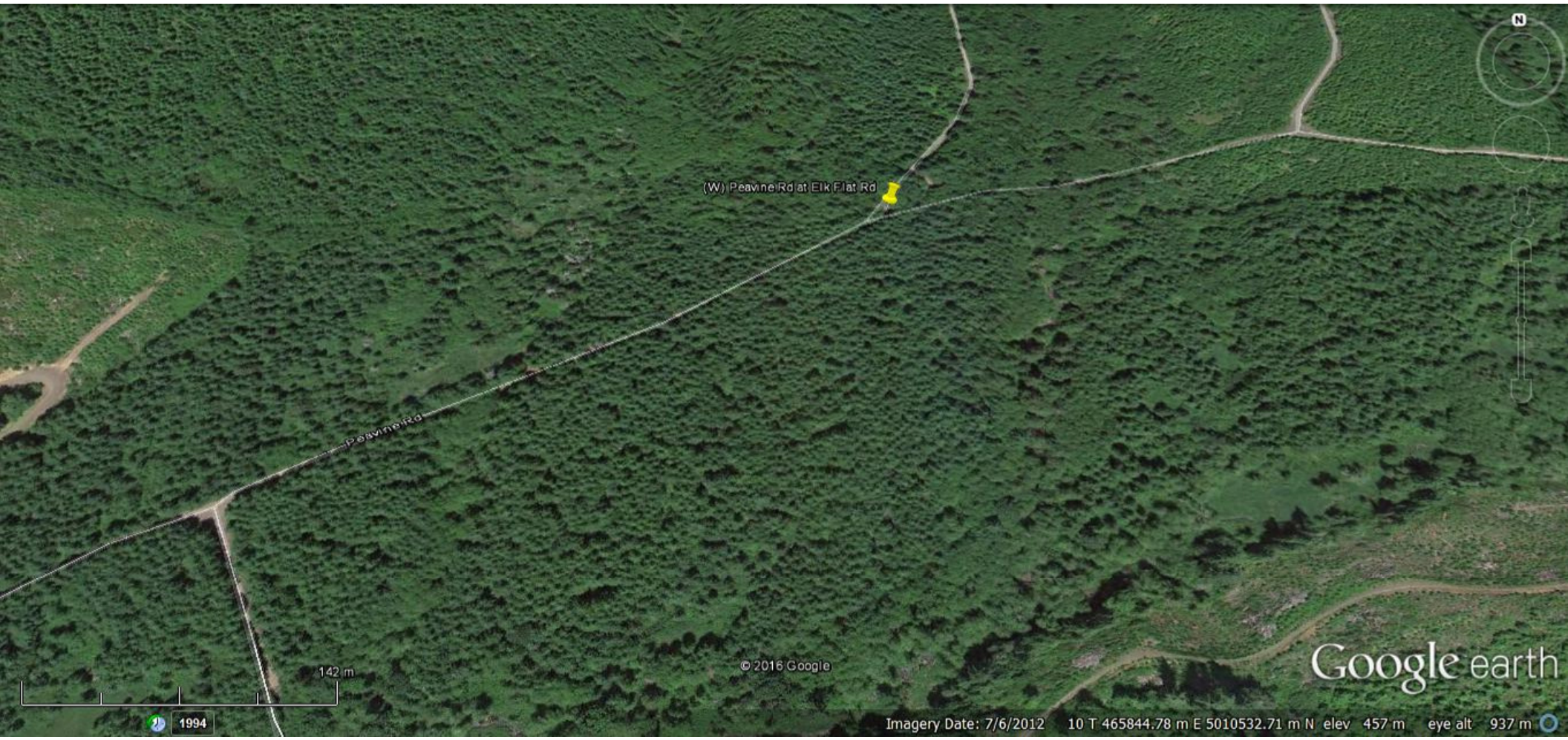
© 2016 Google

Google earth

191 m

1994

Imagery Date: 7/6/2012 10 T 468879.44 m E 5009905.30 m N elev 347 m eye alt 1.05 km



(W) Peavine Rd at Eik Flat Rd

Peavine Rd

Google earth

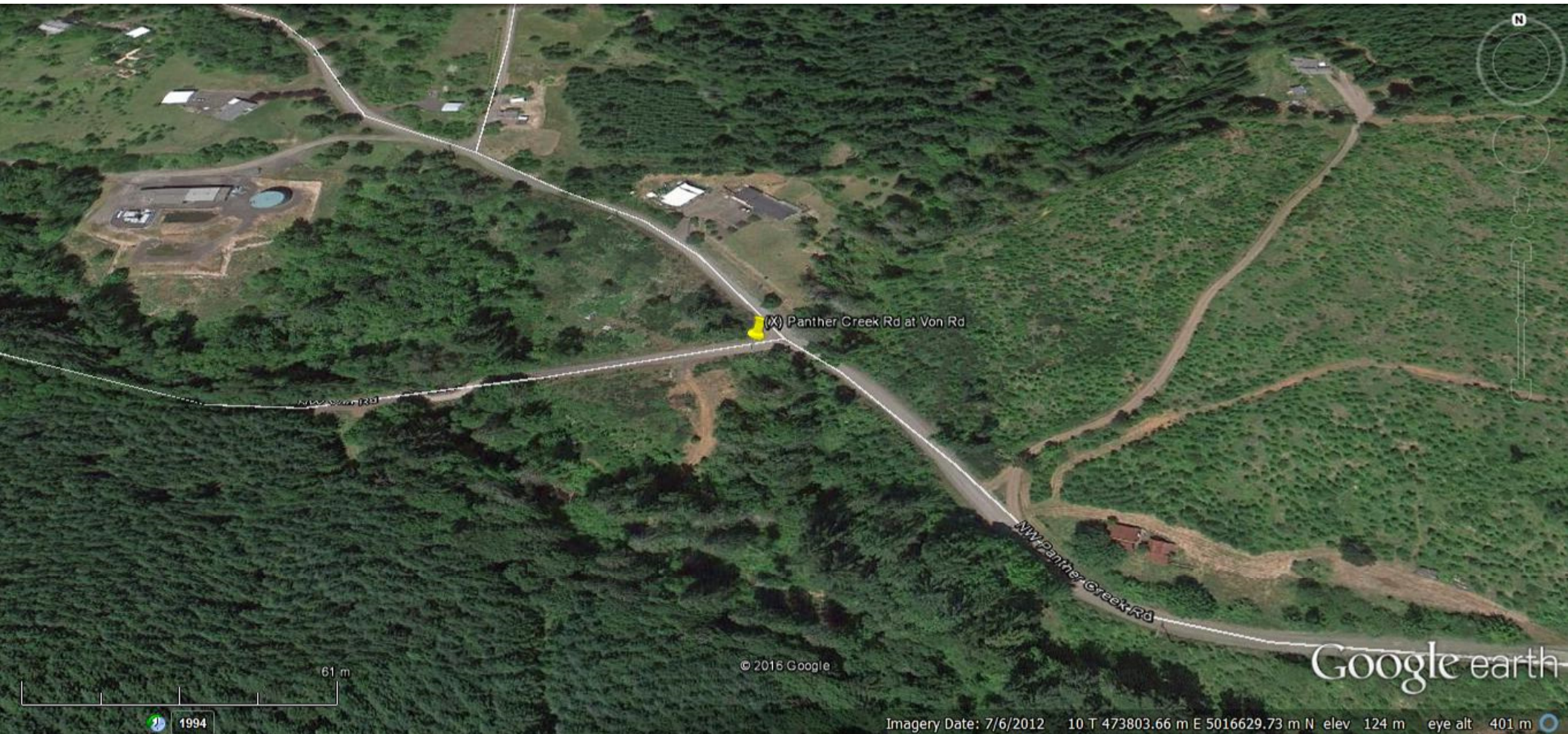
1994

142 m

© 2016 Google

Imagery Date: 7/6/2012 10 T 465844.78 m E 5010532.71 m N elev 457 m eye alt 937 m





(X) Panther Creek Rd at Von Rd

NW Von Rd

NW Panther Creek Rd



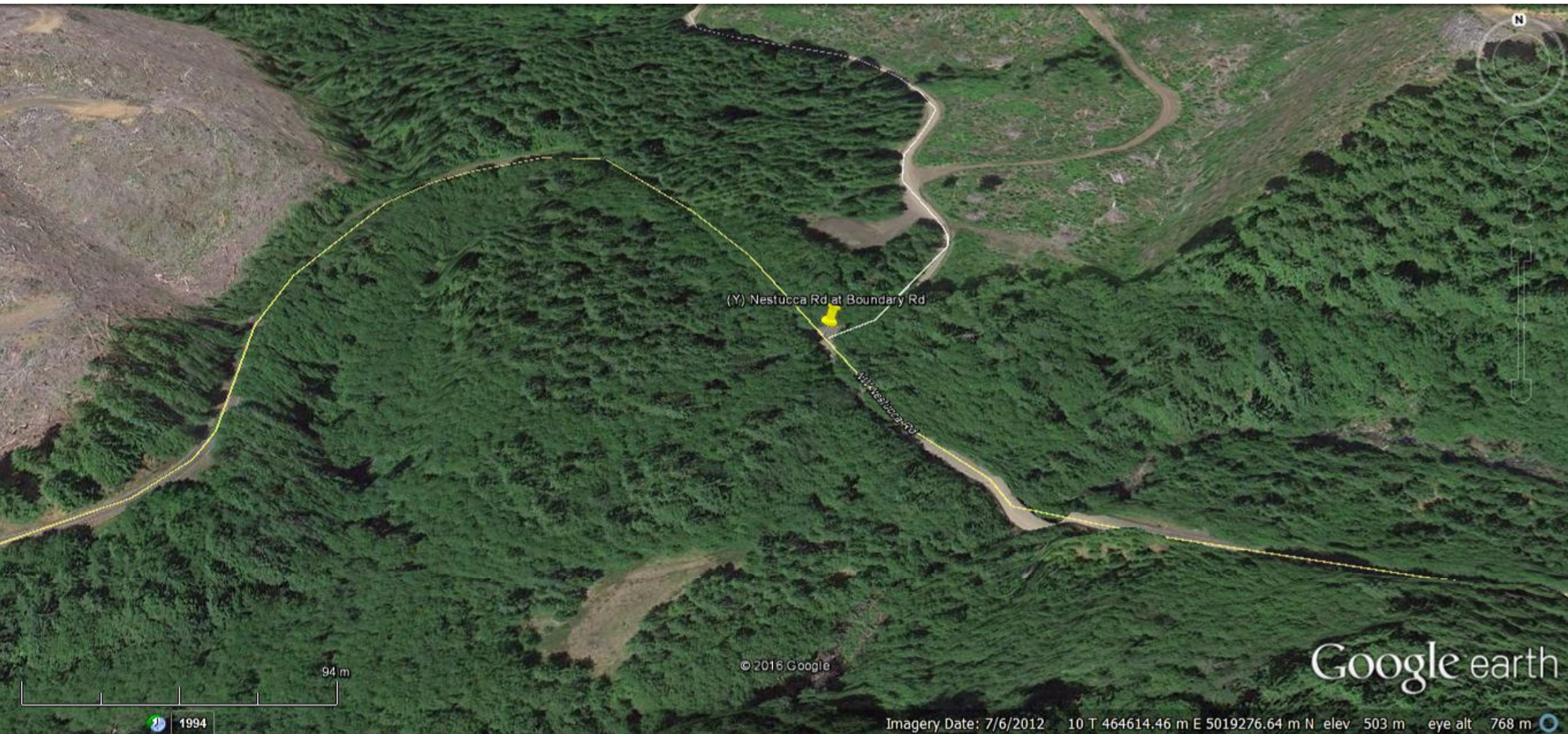
© 2016 Google

Google earth



1994

Imagery Date: 7/6/2012 10 T 473803.66 m E 5016629.73 m N elev 124 m eye alt 401 m



(Y) Nestucca Rd at Boundary Rd

Nestucca Rd

94 m

1994

© 2016 Google

Google earth

Imagery Date: 7/6/2012 10 T 464614.46 m E 5019276.64 m N elev 503 m eye alt 768 m